



Hatton Garden, EC1N

£3,150 Per calendar month

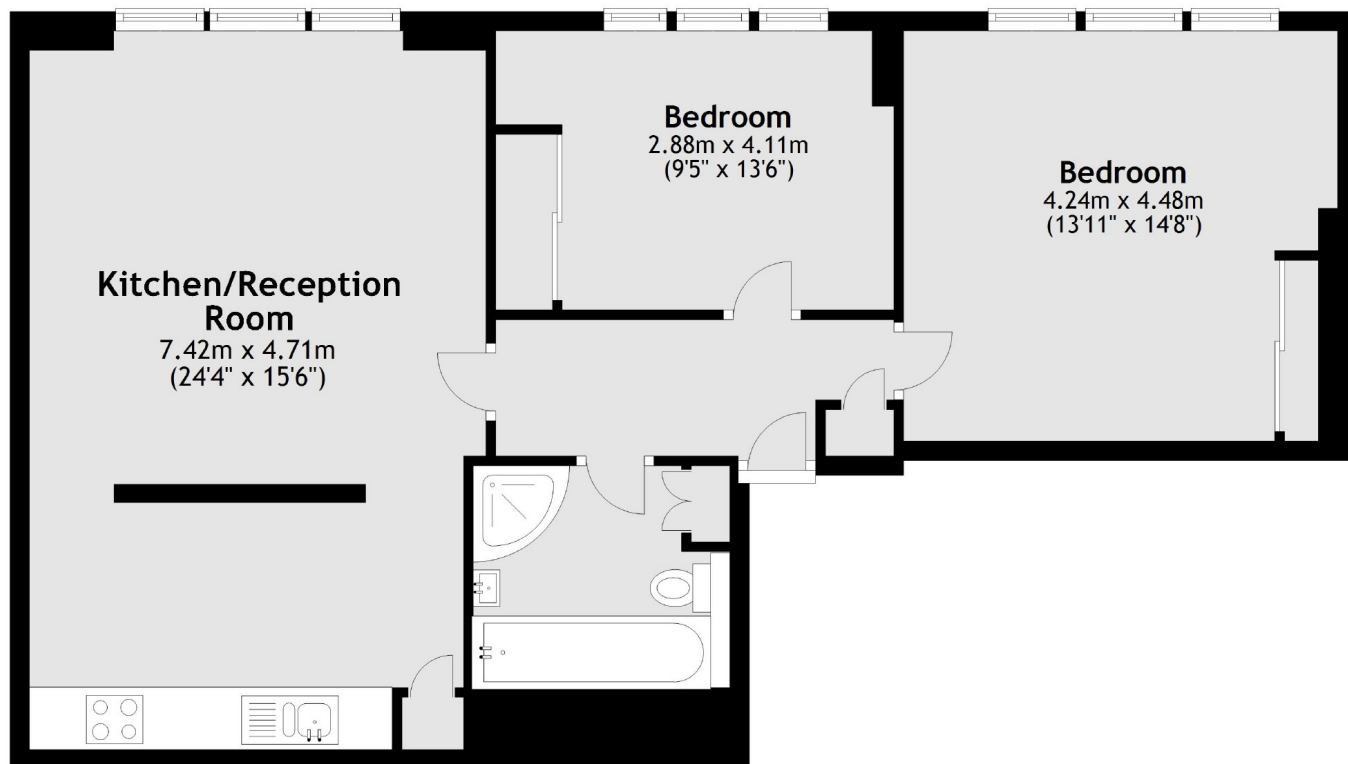
A spacious apartment arranged over the 3rd floor of this boutique apartment block. The apartment offers bright accommodation thanks to the large industrial style windows. There is a large open plan living/dining area, two good size rooms and a modern fitted kitchen.

Ideally located for the City and the West End with many restaurants, amenities and food market on the doorstep. The property is also well connected by Farringdon and Chancery Stations.

Features

- Two Double Bedroom
- Excellent Condition
- Great Transport Links
- Amenities on the Doorstep
- Lift Access
- Secured Entrance

Hatton Garden,
London, EC1N



Total area: approx. 80.5 sq. metres (866.1 sq. feet)