



**POOLE
TOWNSEND**

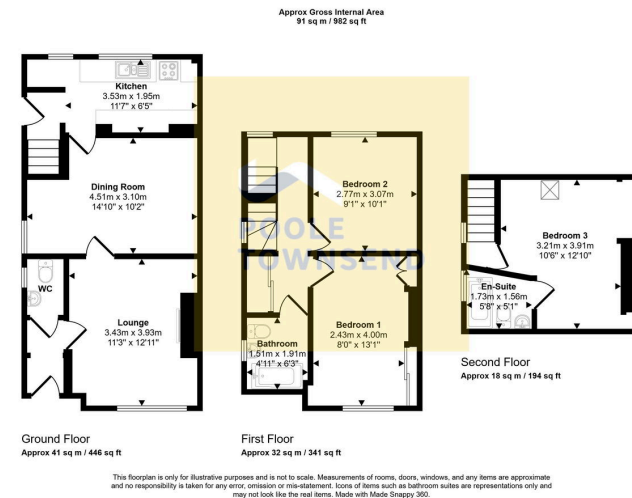
25, Holyoake Terrace Watery Lane,
£250,000

3 2 2



- Fantastic 3 Bedroom Family Home
- Close To Local Amenities
- Private Rear Garden
- Freehold
- Town Centre Location
- No Upper Chain
- Council Tax Band B
- Lounge With Separate Dining Room





This family home offers deceptive accommodation that extends over three floors including a loft bedroom with en-suite bathroom. There are two separate reception rooms, and a fitted kitchen to the GF and two double bedrooms and a 3-piece bathroom on the FF. There is roadside parking, an enclosed forecourt frontage and a gated garden to the rear with lawn and patio. The property boasts a 3.69Kwh solar pv system and an Air to Water heat pump system. An ideal family home that is just a few minutes away from the town centre. No upper chain.

Visit us at
www.pooletownsend.co.uk
enquiries@pooletownsend.co.uk

We are open
 Monday – Friday 9.00 – 5.00
 Saturday 9.00 – 1.00

Barrow 01229 811811
 Ulverston 01229 588111
 Grange 015395 33316
 Kendal 01539 734455
 Milnthorpe 015395 62044