



**POOLE
TOWNSEND**

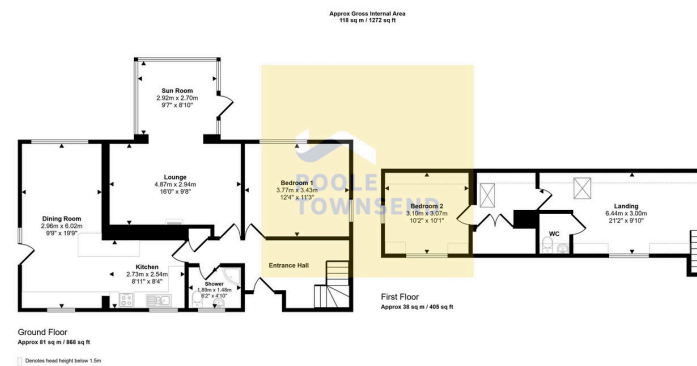
Ivyton, Wall End,
£325,000

2 1 1



- Detached dormer bungalow
- Well presented lounge & dining room
- Lovely sun room
- 2 double bedrooms
- Downstairs shower room and upstairs WC
- Private position with stunning views
- Off road parking
- Generous plot
- Freehold
- Council tax band C





Ivyton is a delightful property that is situated in Wall End, an area that forms part of the larger village of Kirkby-in-Furness. Set on a generous sized plot with a deep garden frontage setting the property back from the road. The accommodation has been extended and greatly improved over the years, adding to the kitchen and creating a spacious dining area. The lounge opens into a highly glazed garden room that has access into the garden and a glimpse of the picturesque Duddon Estuary. There is also a generous sized double bedroom and a shower room that are accessed from the hallway where there are stairs leading to a large landing/TV area where there are views, access to a separate WC and to a second bedroom. There is double glazing throughout and a gas-fired central heating system with a recently installed boiler (May 2025).

Visit us at
www.pooletownsend.co.uk
enquiries@pooletownsend.co.uk

We are open
 Monday – Friday 9.00 – 5.00
 Saturday 9.00 – 1.00

Barrow 01229 811811
 Ulverston 01229 588111
 Grange 015395 33316
 Kendal 01539 734455
 Milnthorpe 015395 62044