



**POOLE  
TOWNSEND**



126 North Lonsdale Road

£200,000

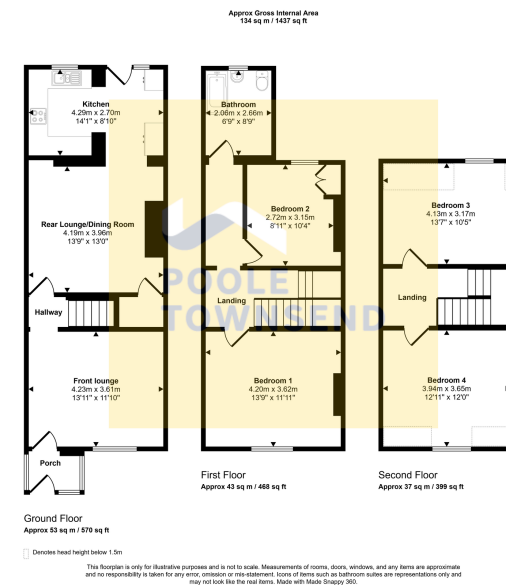
4 1 2





- Fantastic Family Home
- 4 Double Bedrooms
- Suits Variety of Buyers
- Low Maintenance Rear Yard
- Council Tax Band: A
- Walk In Ready
- Close To Town Centre And Local Amenities
- Lounge & Separate Dining Area
- Freehold
- Good Size Bathroom





Immaculately presented forecourt fronted mid-terrace property located to the outskirts of Ulverston providing a four-bedroom accommodation with 2 reception rooms. The property will be suitable for couples, small families and investment purchasers while the property benefits from open views across adjacent fields to the rear. Internally the property features an entrance porch opening into 2 reception rooms, a modern fitted kitchen. To the first floor there are two bedrooms and family bathroom, which leads to the second floor further two bedrooms. While externally the property benefits from an enclosed forecourt front garden and rear yard. The property has been maintained to high standards throughout by the current vendors who have continually developed and improved the property. Internal viewing is highly recommended and arranged via the agents.

Visit us at  
[www.pooletownsend.co.uk](http://www.pooletownsend.co.uk)  
[enquiries@pooletownsend.co.uk](mailto:enquiries@pooletownsend.co.uk)

We are open  
 Monday – Friday 9.00 – 5.00  
 Saturday 9.00 – 1.00

Barrow 01229 811811  
 Ulverston 01229 588111  
 Grange 015395 33316  
 Kendal 01539 734455  
 Milnthorpe 015395 62044