



**POOLE
TOWNSEND**

Sir John Barrow Way, Ulverston

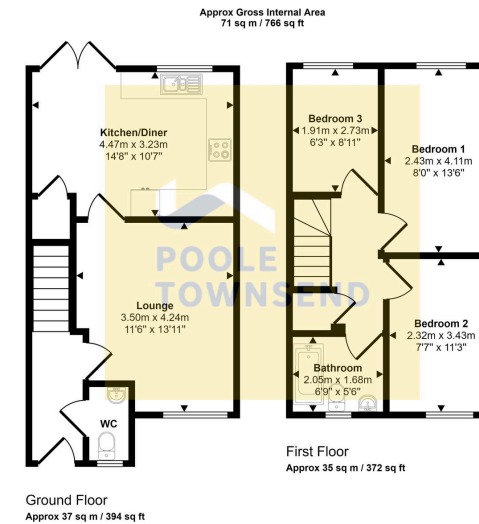
£120,000

3 1 1



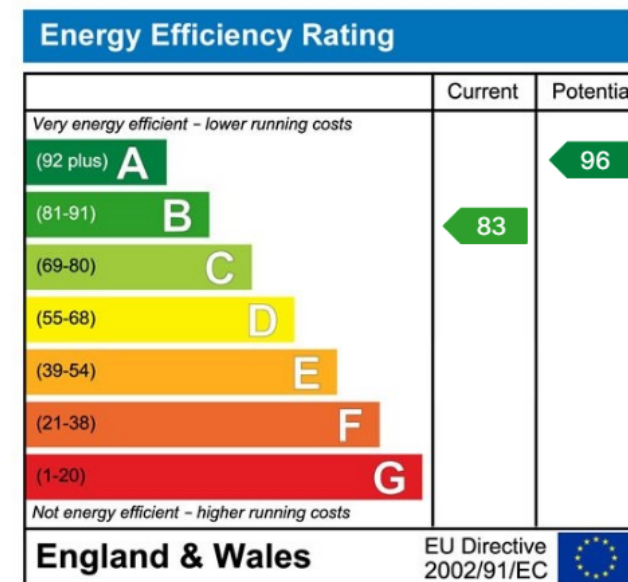
- SHARED OWNERSHIP SCHEME
- Walk In Ready Property
- Close To local Amenities
- Walking Distance To Town Centre
- Garden To The Rear
- Fabulous 3 Bedroon Semi
- Off Road Parking
- Downstairs W/C
- Leashold
- Council Tax Band C





This floorplan is only for illustrative purposes and is not to scale. Measurements of rooms, doors, windows, and any items are approximate and no responsibility is taken for any error, omission or mis-statement. Icons of items such as bathroom suites are representations only and may not look like the real items. Made with Made Snappy 360.

SHARED OWNERSHIP SCHEME This property is situated on the Lund Farm development, a popular location of modern homes that is within walking distance to the historic canal and approximately a mile to the centre of this vibrant market tow. Set within a small cul-de-sac on Lund Farm, this property offers off-road parking for two vehicles immediately outside of the property. Constructed by Oakmere Homes, this property forms part of a shared ownership scheme, making the property more affordable for local buyers. This property offers most modern day refinements that you would expect, including: 2-piece WC/ cloakroom, a family lounge, dining kitchen with integrated appliances and double doors opening into the garden. There are three bedrooms to the first floor and a family bathroom. There is an enclosed garden to the rear with patio and lawn.



Visit us at
www.pooletownsend.co.uk
enquiries@pooletownsend.co.uk

We are open
 Monday – Friday 9.00 – 5.00
 Saturday 9.00 – 1.00

Barrow 01229 811811
 Ulverston 01229 588111
 Grange 015395 33316
 Kendal 01539 734455
 Milnthorpe 015395 62044