



**POOLE
TOWNSEND**

Willowdene Gardens, Ulverston

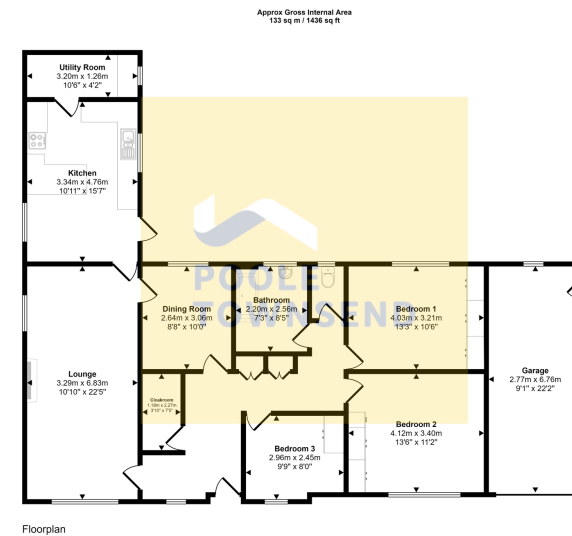
£450,000

3 1 2



- Stunning detached bungalow • Highly sought after location
- 2 light and airy reception rooms • Large shower room
- Kitchen and utility room • No upper chain
- 3 double bedrooms • Freehold
- Beautiful gardens to the side • Council tax band E and rear





This floorplan is only for illustrative purposes and is not to scale. Measurements of rooms, doors, windows, and any items are approximate and no responsibility is taken for any error, omission or mis-statement. Some of items such as bathroom suites are representations only and may not look like the real items. Made with Magic 360.

An outstanding detached bungalow in this lovely position to the outskirts of town, in a sought-after location where properties seldom become available. The accommodation is all on the one level with wide open hallway, large lounge, separate dining room, kitchen with utility room, 3 bedroom 2 of which are large double, 3 piece bathroom suite and single garage. Beautifully presented gardens to the side and rear with established shrubs and flowers. Viewings highly recommended. No upper chain.

Visit us at
www.pooletownsend.co.uk
enquiries@pooletownsend.co.uk

We are open
 Monday – Friday 9.00 – 5.00
 Saturday 9.00 – 1.00

Barrow 01229 811811
 Ulverston 01229 588111
 Grange 015395 33316
 Kendal 01539 734455
 Milnthorpe 015395 62044