



**POOLE  
TOWNSEND**



Greenodd, Ulverston, LA12 7RG

£595,000

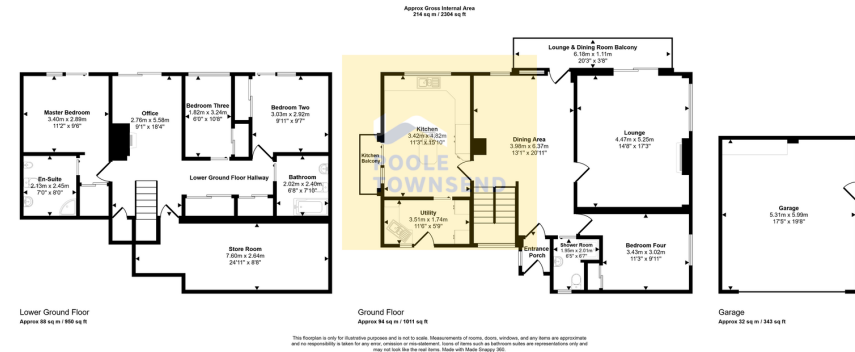
4 3 2





- Fantastic 4 Bedroom Detached Home
- Office Space
- Views Across The Estuary And Nearby Fells
- Sunny Balcony
- Master With En-Suite
- Detached Double Garage And Large Drive
- Large Garden
- Freehold





This architecturally designed family home is set in an elevated position, offering stunning panoramic views across the River Leven, Morecambe Bay, and the surrounding fells. Spacious and filled with natural light, the property is thoughtfully laid over two floors and surrounded by beautifully maintained lawn gardens. The ground floor features two inviting reception rooms, a well-appointed breakfast kitchen, a utility room, a double bedroom, and a shower room. On the lower ground floor, there are three additional bedrooms, including a master with an en-suite, plus a family bathroom. Each bedroom benefits from fitted wardrobes, and two dedicated store rooms provide practical storage solutions. With the added convenience of a private driveway and a detached double garage, this home offers must be viewed to fully appreciate the space, design, and breath-taking scenery this unique property has to offer.

Visit us at  
[www.pooletownsend.co.uk](http://www.pooletownsend.co.uk)  
[enquiries@pooletownsend.co.uk](mailto:enquiries@pooletownsend.co.uk)

We are open  
 Monday – Friday 9.00 – 5.00  
 Saturday 9.00 – 1.00

Barrow 01229 811811  
 Ulverston 01229 588111  
 Grange 015395 33316  
 Kendal 01539 734455  
 Milnthorpe 015395 62044