



**POOLE
TOWNSEND**

Foxfield, Broughton-in-furness, LA20 6BU

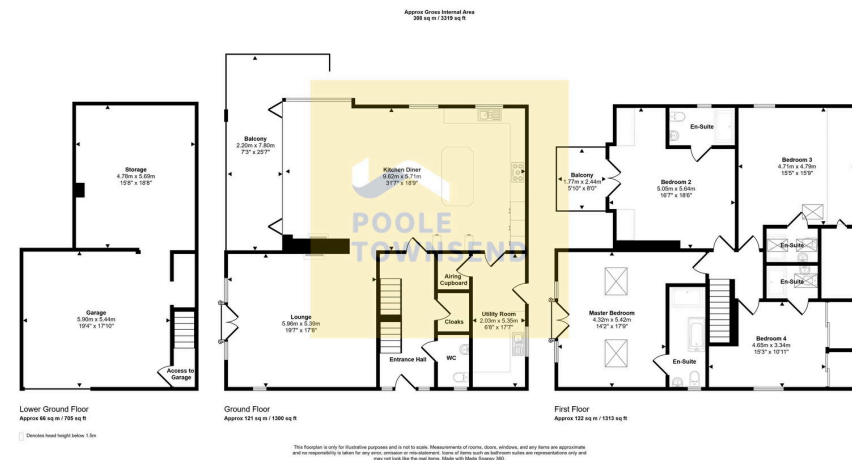
£750,000

4 4 2

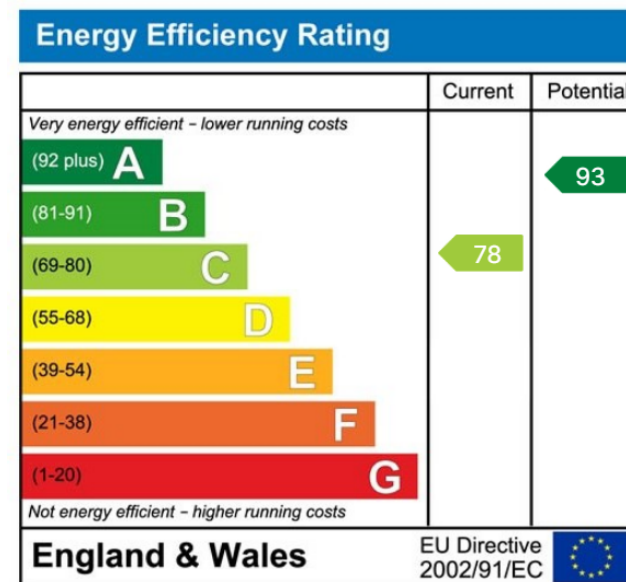


- Exceptional detached family home
- Beautiful open plan living area
- 4 great sized bedrooms all with en-suite
- Double garage and under-croft storage
- Freehold
- Stunning location looking over the Duddon Estuary
- Stylish and modern kitchen area
- Under floor heating throughout
- Enclosed garden with decking
- Council tax band F





This imposing, detached home is located in a delightful, semi-rural location in Foxfield alongside the shores of Duddon Estuary and only minutes away from the historic town of Broughton-in-Furness. The modern design and construction of this property fully embrace today's lifestyle, featuring generous proportions throughout, free-flowing living accommodation with a stunning kitchen that has a breakfast bar/island and a wall of folding doors opening onto a covered balcony with heating and steps leading into the garden. There is also a large utility room/laundry room with walk-in linen cupboard, 2-piece cloakroom/WC, 4 double bedrooms (all with en-suite facilities). The master bedroom has a Juliet style balcony and the second bedroom has a covered balcony with space for a bistro table and chairs. There is under floor heating throughout the accommodation with wall mounted thermostats. The property has an integral



Visit us at
www.pooletownsend.co.uk
enquiries@pooletownsend.co.uk

We are open
 Monday – Friday 9.00 – 5.00
 Saturday 9.00 – 1.00

Barrow 01229 811811
 Ulverston 01229 588111
 Grange 015395 33316
 Kendal 01539 734455
 Milnthorpe 015395 62044