



**POOLE  
TOWNSEND**



# Sheriff Bank, Greenodd

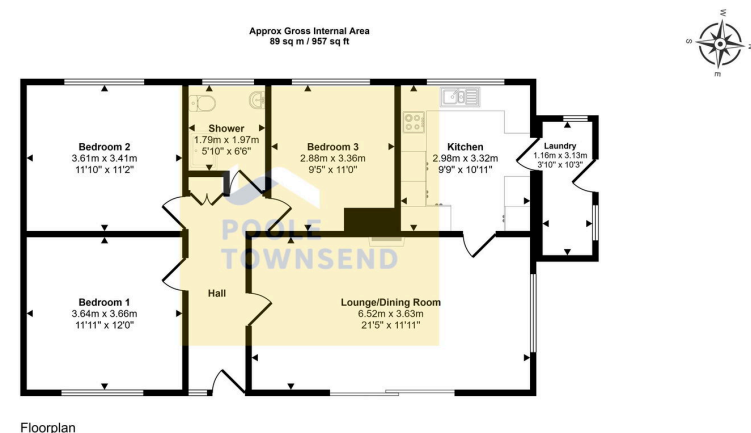
£375,000

3 1 1









This floorplan is only for illustrative purposes and is not to scale. Measurements of rooms, doors, windows, and any items are approximate and no responsibility is taken for any error, omission or mis-statement. Icons of items such as bathroom suites are representations only and may not look like the real items. Made with Made Snappy 360.

Located in a lovely, elevated position within the village of Greenodd, boasting fine elevated views to the front towards the Levens Estuary and tree lined fields. The property's accommodation is nicely proportioned and offers 3 bedrooms, a spacious lounge/diner with sliding door accessing a large terrace, a smartly modernised shower room and kitchen with integrated appliances and laundry room alongside. There is a modern condensing-combi boiler, upvc DG, an integral garage and off-road parking. The rear garden features a large patio and a shaped lawn with greenhouse and shed. No upper chain.

Visit us at  
[www.pooletownsend.co.uk](http://www.pooletownsend.co.uk)  
[enquiries@pooletownsend.co.uk](mailto:enquiries@pooletownsend.co.uk)

We are open  
 Monday – Friday 9.00 – 5.00  
 Saturday 9.00 – 1.00

Barrow 01229 811811  
 Ulverston 01229 588111  
 Grange 015395 33316  
 Kendal 01539 734455  
 Milnthorpe 015395 62044