



**POOLE
TOWNSEND**

Clarence Street, Ulverston, LA12 7JJ

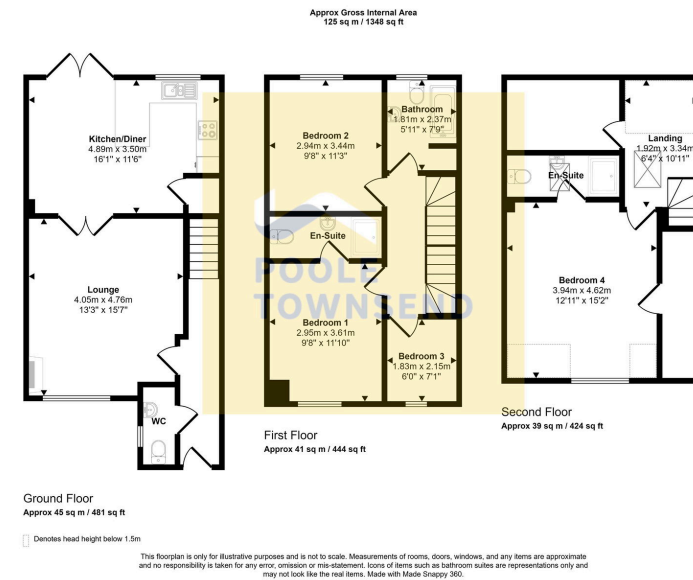
£365,000

4 3 1

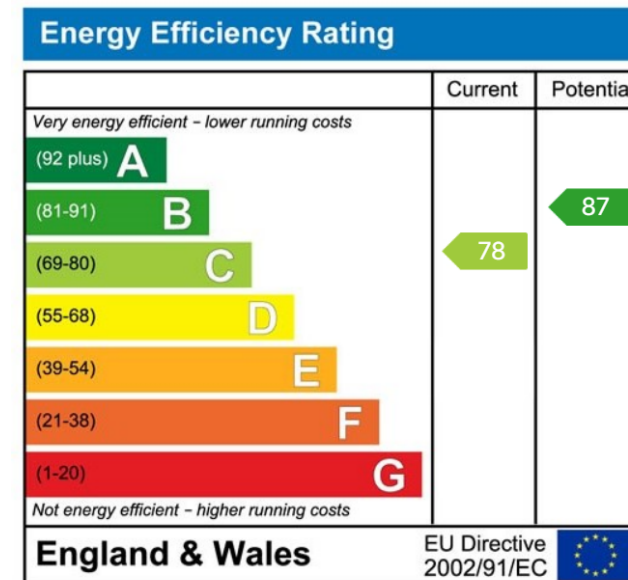


- Modern town house
- Well presented throughout
- Spacious lounge
- Stylish kitchen
- Freehold
- Close to all town centre amenities
- Parking for 2 vehicles
- Double doors leading to the patio style garden
- 4 bedrooms (2 en-suite)
- Council tax band C





This exclusive development of 8 town house style properties is located just a stones through away from the heart of this vibrant Market town. Constructed circa 2012, this stylishly presented 3 storey home offers spacious accommodation that would ideally suit a family buyer. There is a generously proportioned lounge with a feature stove, a kitchen/diner with double doors opening into a patio style garden, 2-piece GF cloakroom, 3 first floors bedrooms (1 en-suite) and a family bathroom, 1 second floor bedroom with en-suite shower room. There is ORP for 2 cars, upvc DG and a GCH system.



Visit us at
www.pooletownsend.co.uk
enquiries@pooletownsend.co.uk

We are open
 Monday – Friday 9.00 – 5.00
 Saturday 9.00 – 1.00

Barrow 01229 811811
 Ulverston 01229 588111
 Grange 015395 33316
 Kendal 01539 734455
 Milnthorpe 015395 62044