



**POOLE
TOWNSEND**

Whitbeck, Millom

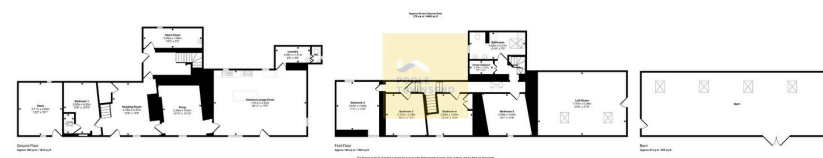
£500,000

5 2 2



- Fantastic 5 Bedroom Detached House
- Large Garden
- Freehold
- Views To The Distant Fells
- Lounge With Feature Fireplace
- Off Road Parking
- Rural Location
- Council Tax Band D
- 4 Piece Bathroom Suite





A truly unique home of immense character, sitting at the foot of Black Combe and boasting an extensive garden, a detached allotment, a single storey barn and versatile accommodation. This charming home features 5 double bedrooms, 1 with an en-suite shower, a snug and separate lounge, a stunning 5-piece bathroom and a fabulous open plan kitchen with island units, dining area and lounge space. There is potential to add further living space within the space above the kitchen (subject to all relevant permissions etc). This is a picturesque location within the Lake District National Park, hugging the South West Cumbrian coastline where you can explore and enjoy the views along the local bridleways and Cumbria Coastal Way.

Visit us at
www.pooletownsend.co.uk
enquiries@pooletownsend.co.uk

We are open
 Monday – Friday 9.00 – 5.00
 Saturday 9.00 – 1.00

Barrow 01229 811811
 Ulverston 01229 588111
 Grange 015395 33316
 Kendal 01539 734455
 Milnthorpe 015395 62044