



**POOLE  
TOWNSEND**



# Silverdell, Pennington LA12 7NU with 3.25 acres attached land, 3 stables, barn and secure outbuildings

£600,000

🛏 4 🚿 3 🚗 3

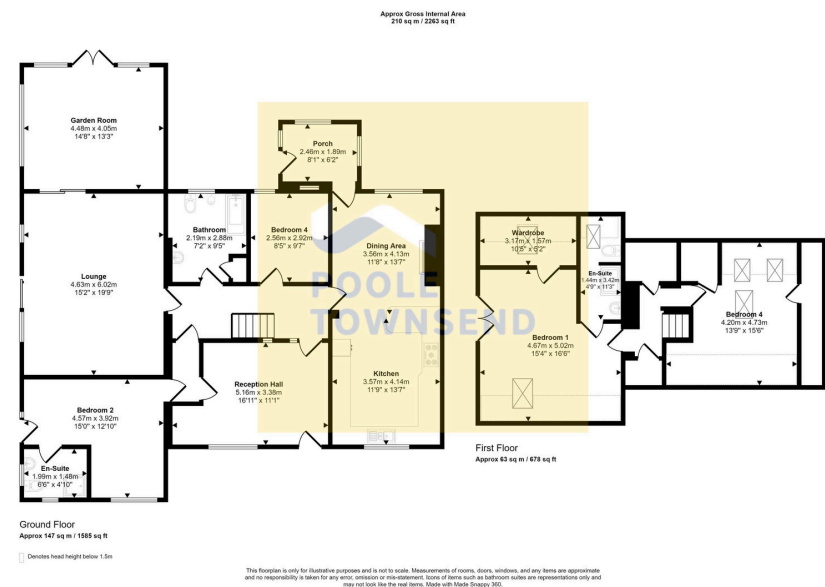




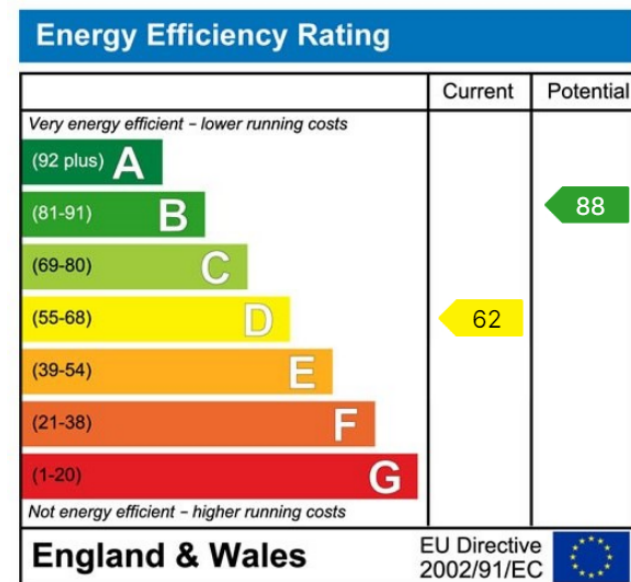
- Amazing opportunity to purchase this wonderful home with 3.25 acres of land
- 3 reception rooms
- Farmhouse kitchen
- 3/4 beds with 2 en-suite
- Parking for several vehicles
- The kitchen garden and land are south facing
- Outbuildings and stables
- Full planning permission for a static caravan
- Freehold
- Council tax band C







Situated in a beautiful rural setting and surrounded by open farmland with a network of public footpaths allowing you to enjoy tranquil walks with fabulous views. This individual home has been significantly improved and extended, creating wonderful family sized accommodation with 3/4 bedrooms (2 en-suite shower rooms), a spacious lounge with garden access, a highly glazed garden room, kitchen/dining room, a welcoming reception hall and a 4-piece bathroom with Jacuzzi style bath. Silverdell is a wonderful home to consider if you would like to embrace country living with a desire to experience the 'Good Life' by growing fruit in your own orchard and vegetables/herbs from the garden or you have a love of all things equestrian that can be enjoyed on your own land with tack room, barn and three stables, there is also a secure workshop, all with electric and water, 2 summerhouses and log store, along with the original 2



Visit us at  
[www.pooletownsend.co.uk](http://www.pooletownsend.co.uk)  
[enquiries@pooletownsend.co.uk](mailto:enquiries@pooletownsend.co.uk)

We are open  
 Monday – Friday 9.00 – 5.00  
 Saturday 9.00 – 1.00

Barrow 01229 811811  
 Ulverston 01229 588111  
 Grange 015395 33316  
 Kendal 01539 734455  
 Milnthorpe 015395 62044