



**POOLE
TOWNSEND**

Moorfield House, Little Urswick

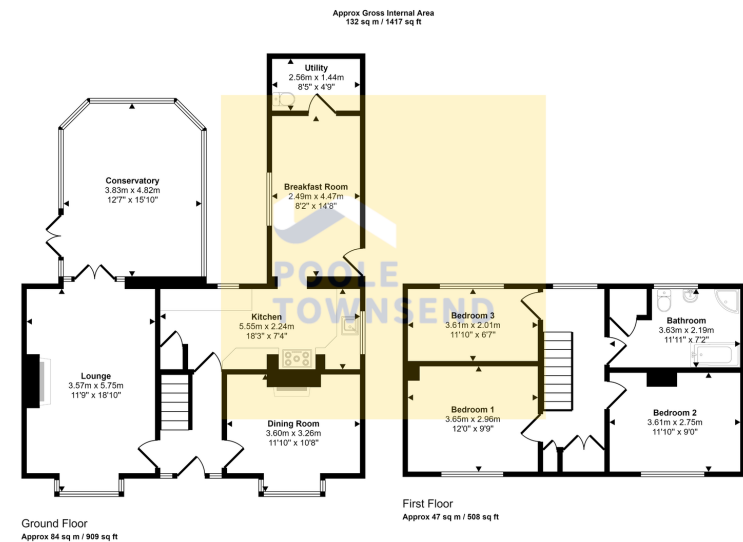
£595,000

3 1 3



- Fabulous Family Home
- Walk-In-Ready Home
- Country Style Kitchen With Aga
- Driveway And Garages
- Ample Outdoor Space Ideal for Entertaining
- 3 Double Bedrooms
- Lounge And Separate Dining Area
- Large Conservatory
- Beautiful Countryside Views
- Freehold





This floorplan is only for illustrative purposes and is not to scale. Measurements of rooms, doors, windows, and any items are approximate and no responsibility is taken for any error, omission or mis-statement. Items of items such as bathroom suites are representations only and may not look like the real items. Made with Made Drafty 360.

A truly outstanding detached house, situated amongst generous and spacious grounds to the outskirts of Great and Little Urswick. This stunning family property offers spacious accommodation particularly suited to the family buyer with three reception rooms plus large conservatory and three bedrooms. The property has oil fired central heating system and DG throughout. Moorfield is a wonderful home to consider if you would like to embrace country living with a desire to experience the 'Good Life' by growing fruit in your own orchard and vegetables/herbs from the garden. There is also a secure workshop/shed, all with electric and water, log stores, poly tunnel, greenhouse and several seating area dotted around. This property has potential to add a stable to the far right hand side garden as this is plenty big enough for a horse or even just hens. This property is a must see.

Visit us at
www.pooletownsend.co.uk
enquiries@pooletownsend.co.uk

We are open
 Monday – Friday 9.00 – 5.00
 Saturday 9.00 – 1.00

Barrow 01229 811811
 Ulverston 01229 588111
 Grange 015395 33316
 Kendal 01539 734455
 Milnthorpe 015395 62044