



**POOLE  
TOWNSEND**



# Sandhall Cottages, Ulverston, LA12 9EH - Extended cottage with fabulous gardens and outdoor bar

£350,000

3 1 3

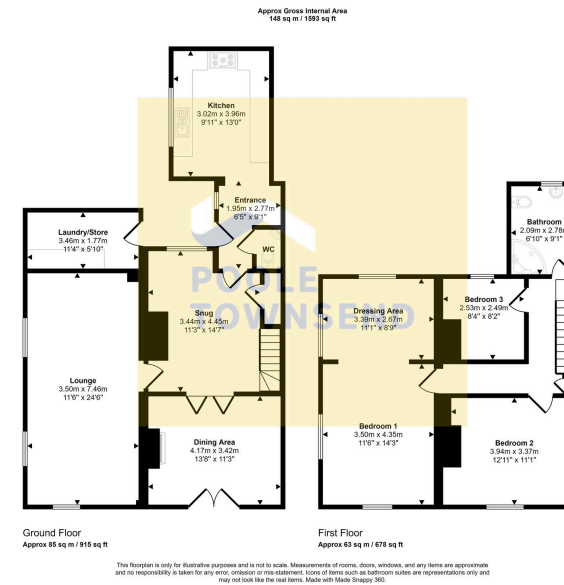




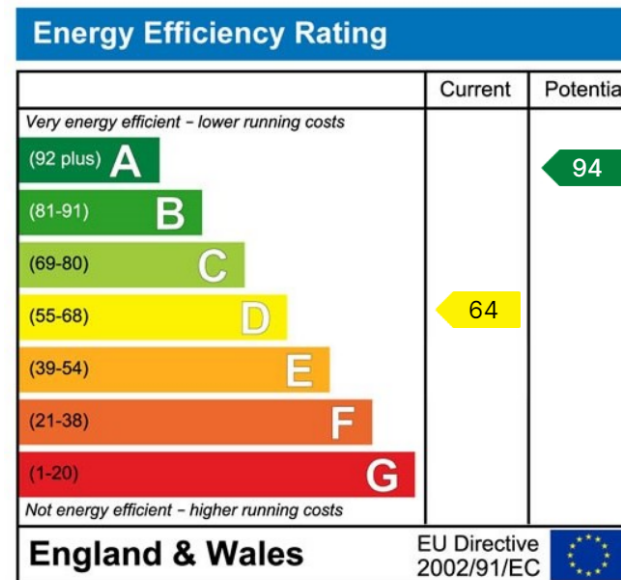
- Beautiful spacious cottage home
- 3 reception rooms
- Downstairs wc and laundry room
- Amazing gardens with bar and dining area
- Freehold
- Stunning location surrounded by countryside
- Cottage style kitchen
- 3 bedrooms, main with dressing room
- Viewing is highly recommended
- Council tax band C







This charming home is situated in a lovely rural location with fabulous views to the adjacent countryside. The property has been significantly improved with the addition of a two-storey extension to the side elevation which has added a further reception room and a bedroom above with a dressing area. The accommodation would be ideal for a family buyer who would also enjoy the stunning gardens that features a home bar and a covered dining area making a perfect space for socialising and relaxing. There are three separate reception rooms, kitchen, ground floor WC, three bedrooms and a family bathroom. There is off-road parking for a single vehicle, a gas-fired central heating system and DG.



Visit us at  
[www.pooletownsend.co.uk](http://www.pooletownsend.co.uk)  
[enquiries@pooletownsend.co.uk](mailto:enquiries@pooletownsend.co.uk)

We are open  
 Monday – Friday 9.00 – 5.00  
 Saturday 9.00 – 1.00

Barrow 01229 811811  
 Ulverston 01229 588111  
 Grange 015395 33316  
 Kendal 01539 734455  
 Milnthorpe 015395 62044