



**POOLE
TOWNSEND**

Sandhall Cottages, Ulverston, LA12 9EH - Extended cottage with fabulous gardens and garden bar

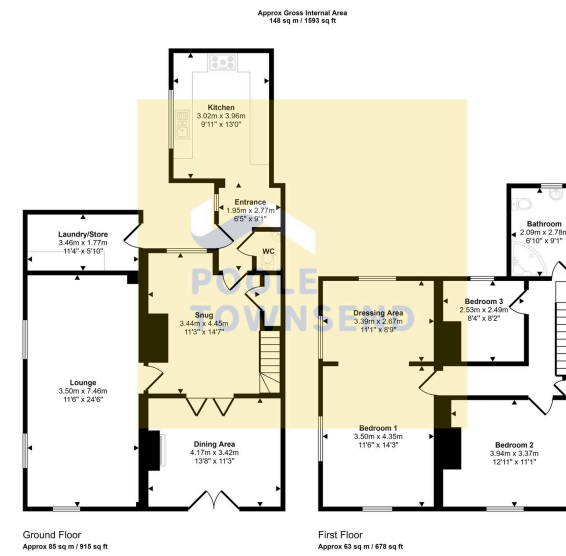
£350,000

🛏 3 🚿 1 🚗 3



- Beautiful spacious cottage home
- 3 reception rooms
- Downstairs wc and laundry room
- Amazing gardens with bar and dining area
- Freehold
- Stunning location surrounded by countryside
- Cottage style kitchen
- 3 bedrooms, main with dressing room
- Viewing is highly recommended
- Council tax band C





This floorplan is only for illustrative purposes and is not to scale. Measurements of rooms, doors, windows, and any items are approximate and no responsibility is taken for any error, omission or mis-statement. Copies of items such as bathroom suites are representative only and may not look like the real items. Made with Maple Smappy 300.

This charming home is situated in a lovely rural location with fabulous views to the adjacent countryside. The property has been significantly improved with the addition of a two-storey extension to the side elevation which has added a further reception room and a bedroom above with a dressing area. The accommodation would be ideal for a family buyer who would also enjoy the stunning gardens that features a home bar and a covered dining area making a perfect space for socialising and relaxing. There are three separate reception rooms, kitchen, ground floor WC, three bedrooms and a family bathroom. There is off-road parking for a single vehicle, a gas-fired central heating system and DG.

Visit us at
www.pooletownsend.co.uk
enquiries@pooletownsend.co.uk

We are open
 Monday – Friday 9.00 – 5.00
 Saturday 9.00 – 1.00

Barrow 01229 811811
 Ulverston 01229 588111
 Grange 015395 33316
 Kendal 01539 734455
 Milnthorpe 015395 62044