

## Lightburn Road, Ulverston, Cumbria, LA12 0AU

£285,000

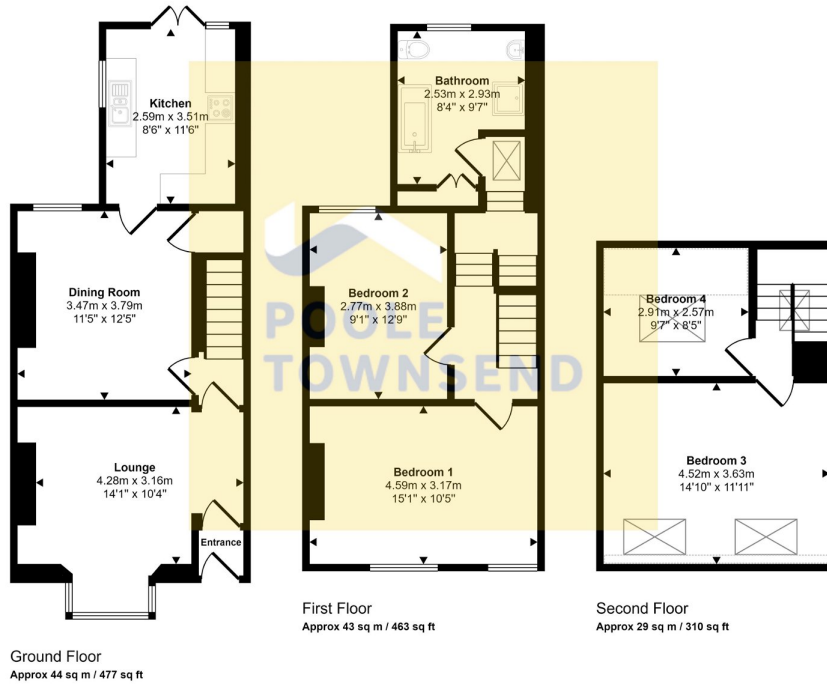
 4  1  2



- A property not to be missed!
- Immaculately presented throughout
- 2 reception rooms
- 4 double bedrooms
- Stylish 4 piece bathroom
- Forecourt fronted with garden to rear
- Great location within walking distance to town centre
- Ideal family home
- Furniture available by separate negotiation
- No upper chain



Approx Gross Internal Area  
116 sq m / 1250 sq ft



This floorplan is only for illustrative purposes and is not to scale. Measurements of rooms, doors, windows, and any items are approximate and no responsibility is taken for any error, omission or mis-statement. Icons of items such as bathroom suites are representations only and may not look like the real items. Made with Made Snappy 360.

This delightful Victorian style terrace offers plenty of kerb appeal, featuring an enclosed forecourt garden and beautiful, natural limestone and sandstone façade. Being generously proportioned with accommodation extending over 3 floors, this fine home is sure to enjoy wide appeal, particularly from family buyers. Four double bedrooms, 2 reception rooms including a bay fronted front lounge with exposed floorboards, feature tiling and decorative fireplace plus an impressive, 4-piece bathroom including a roll-top bath and separate shower. Conveniently located for the town centre amenities, boutique style shops and eateries, art deco cinema and excellent transport links making this an ideal location for commuters to consider.