



**POOLE  
TOWNSEND**



# Bridge End, Broad Oak, Ravenglass, CA18 1RR

£240,000

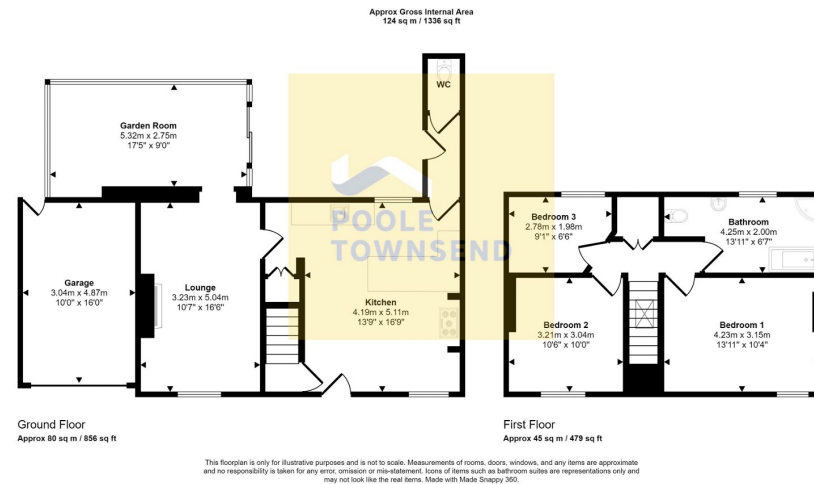
3 1 1



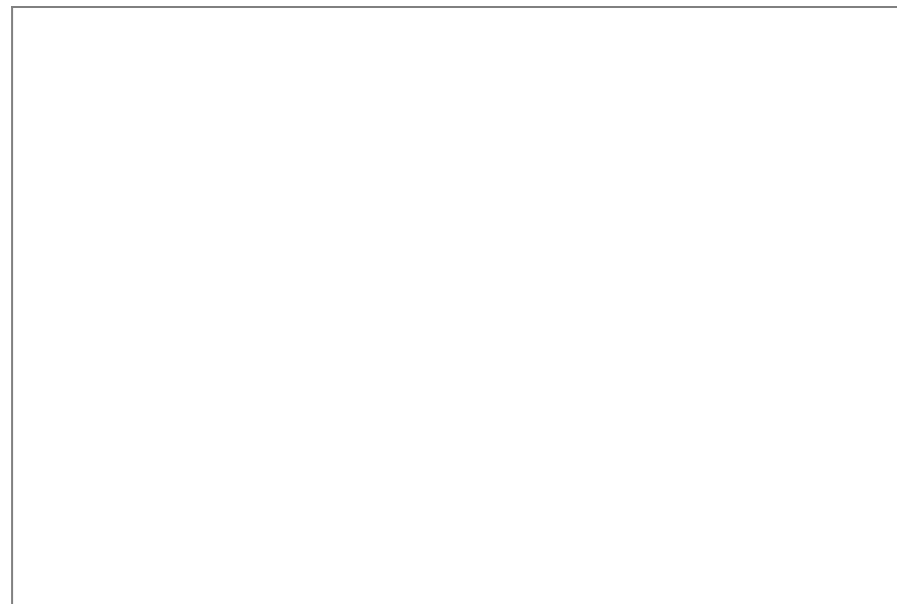


- Freehold
- Council Tax Band A
- Fantastic Family Home
- 3 Bedrooms
- Garage And Garden Room
- Fabulous Lawned Gardens
- Kitchen With Dining Area
- Large Bathroom
- Beautiful Countryside Views





Beautifully situated in a beautiful rural location with fabulous views to the front towards farmland and tree covered hills. The property has been extended which has greatly improved the main living area by adding a highly glazed garden room overlooking the garden. The lounge is a nicely proportioned room with a solid fuel stove creating a focal point in the room. The adjacent kitchen is spacious featuring a breakfast bar a second cosy lounge space. There is a GF WC in addition to the 4-piece bathroom upstairs. The bedrooms include two double rooms that overlook the farmland and a smaller single bedroom to the rear overlooking the garden. There is an attached garage with a remotely operated door and extensive garden with sheds, greenhouse, patio and lawn.



Visit us at  
[www.pooletownsend.co.uk](http://www.pooletownsend.co.uk)  
[enquiries@pooletownsend.co.uk](mailto:enquiries@pooletownsend.co.uk)

We are open  
 Monday – Friday 9.00 – 5.00  
 Saturday 9.00 – 1.00

Barrow 01229 811811  
 Ulverston 01229 588111  
 Grange 015395 33316  
 Kendal 01539 734455  
 Milnthorpe 015395 62044