



**POOLE
TOWNSEND**

Green Bank, Ulverston, LA12 7HA

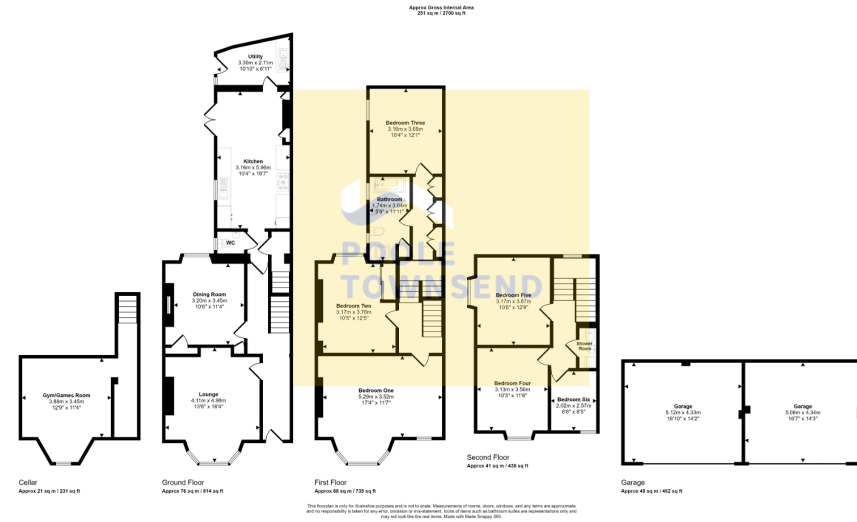
£675,000

6 2 2

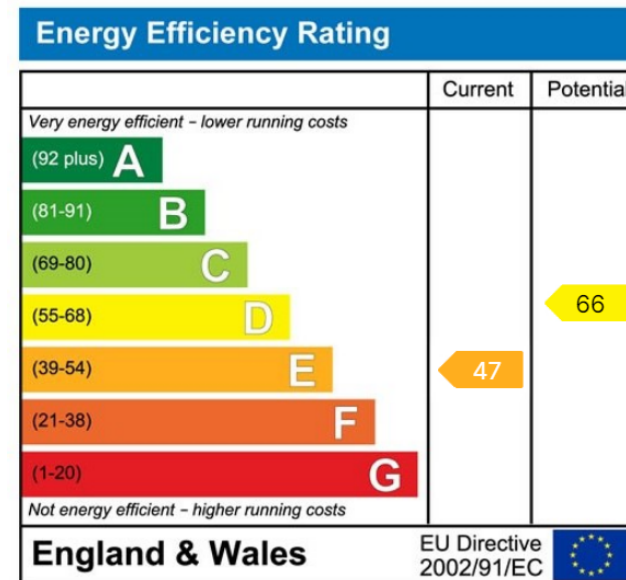


- Stylish town house
- 2 reception rooms
- Large family kitchen
- 6 good sized bedrooms
- Detached double garages
- Most sought after location
- Spacious accommodation throughout
- Fabulous views
- Freehold
- Council tax band E





Situated in one of the town's prime residential areas and enjoying far reaching views is this imposing and stylishly presented semi-detached property. Boasting both extensive and spacious accommodation sensibly arranged over three floors, many rooms retain a wealth of period features such as high ceilings with ornate cornice work, picture rails, deep skirtings and open fires. With the added benefit of a large full height cellar, surrounding south facing gardens, patios, parking and a detached building housing 2 large garages, this property must be viewed to be appreciated.



Visit us at
www.pooletownsend.co.uk
enquiries@pooletownsend.co.uk

We are open
 Monday – Friday 9.00 – 5.00
 Saturday 9.00 – 1.00

Barrow 01229 811811
 Ulverston 01229 588111
 Grange 015395 33316
 Kendal 01539 734455
 Milnthorpe 015395 62044