



**POOLE
TOWNSEND**

Great Urswick, Ulverston, LA12 0SY

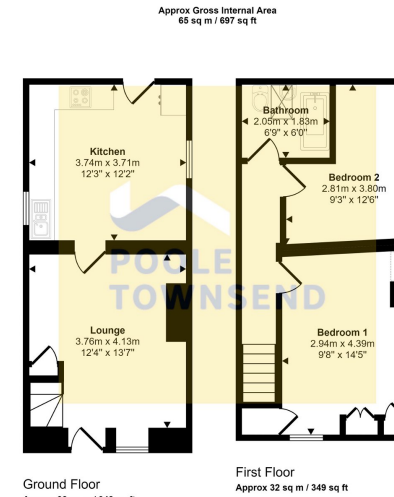
£175,000

🛏️ 2 🚿 1 🚗 0



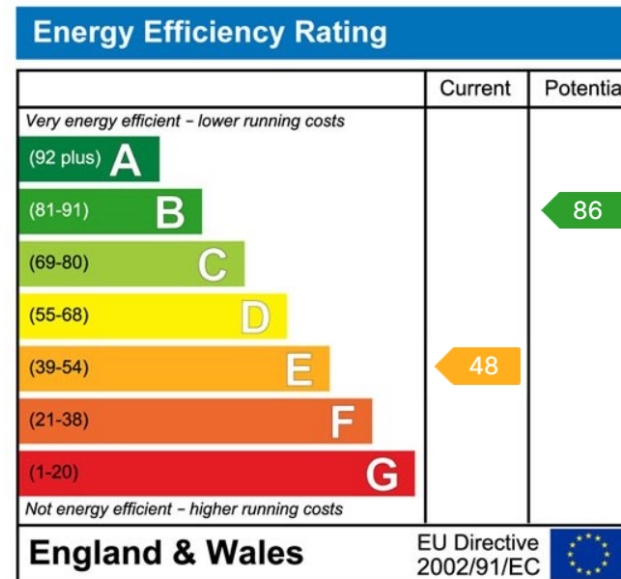
- Character cottage
- Enclosed patio
- Modern bathroom
- Gas central heating
- Freehold
- Village location
- 2 bedrooms
- Partial renovation
- Double glazing
- Council tax B





This floorplan is only for illustrative purposes and is not to scale. Measurements of rooms, doors, windows, and any items are approximate and no responsibility is taken for any error, omission or mis-statement. Icons of items such as bathroom suites are representations only and may not look like the real items. Made with Made Snappy 360.

This two bedroom cottage presents a great opportunity for you to purchase a characterful property in a lovely location with lots of room for further upgrading. The living accommodation features a comfortable size lounge with access onto an enclosed patio and an open plan kitchen/dining room with slate flagged floor. The landing gives separate access to the two bedrooms and to the bathroom which features a modern roll top bath with claw and ball feet. There is a gas central heating system, double glazing, off road parking and no upper chain.



Visit us at
www.pooletownsend.co.uk
enquiries@pooletownsend.co.uk

We are open
 Monday – Friday 9.00 – 5.00
 Saturday 9.00 – 1.00

Barrow 01229 811811
 Ulverston 01229 588111
 Grange 015395 33316
 Kendal 01539 734455
 Milnthorpe 015395 62044