



**POOLE  
TOWNSEND**



# Meadow View, Bouth

£650,000

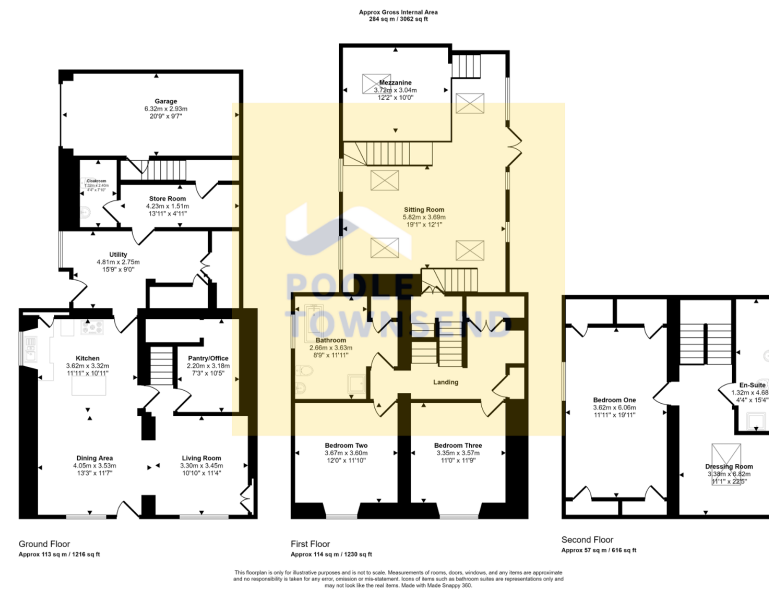
4 3 2





- Beautiful Original Character
- Barn Conversion
- Within Lake District National Park
- Ideal Family Home
- Picturesque Countryside Views
- Integral Garage
- Beautifully Landscaped Garden
- Modern Fixtures & Fittings
- Council Tax Band: F
- EPC Rating: TBC





Situated within the sought-after Lake District village of Bouth is this deceptively spacious family home, which offers substantial living accommodation, an integral garage and well-tendered, beautifully landscaped gardens. Retaining an abundance of original character features, whilst seamlessly blending modern fixtures and fittings. The surrounding views are a true selling point of this superb home. The living accommodation consists of lounge, large kitchen-diner, utility space, pantry & WC, all encompassing the ground floor. The first floor boasts a further bigger reception room, with mezzanine level, 2 bedrooms and a family bathroom, whilst the second floor holds the master suite, complete with dressing room and en-suite. This property must be viewed to be appreciated.

Visit us at  
[www.pooletownsend.co.uk](http://www.pooletownsend.co.uk)  
[enquiries@pooletownsend.co.uk](mailto:enquiries@pooletownsend.co.uk)

We are open  
 Monday – Friday 9.00 – 5.00  
 Saturday 9.00 – 1.00

Barrow 01229 811811  
 Ulverston 01229 588111  
 Grange 015395 33316  
 Kendal 01539 734455  
 Milnthorpe 015395 62044