



**POOLE
TOWNSEND**

105 Birchwood Drive

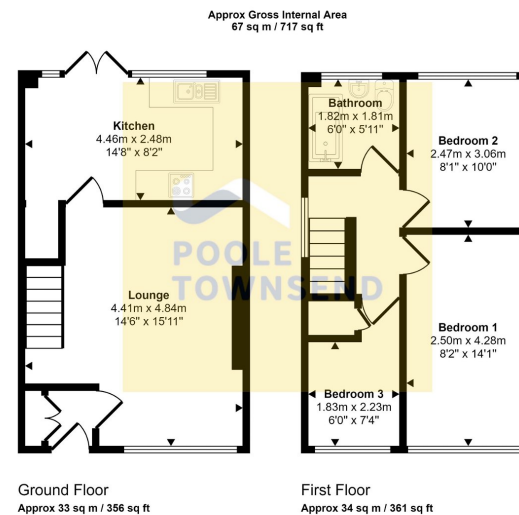
£227,500

3 1 1



- Freehold
- Council Tax Band B
- Bright Modern Family Home
- Walk In Ready
- Walking Distance To Amenities
- Beautiful Countryside Views To The Rear
- Off Road Parking To Front And Side
- Lawned Garden To rear
- No Chain
- Garden Shed





This floorplan is only for illustrative purposes and is not to scale. Measurements of rooms, doors, windows, and any items are approximate and no responsibility is taken for any error, omission or mis-statement. Icons of items such as bathroom suites are representations only and may not look like the real items. Made with Made Snappy 360.

This family home is situated in the sought after area of Croftlands conveniently located on the local bus route and also enjoying a lovely view onto the fields behind. The accommodation has a light finish through with modern fitted kitchen and bathroom, new carpets, double glazing and a gas central heating system. There is a spacious lounge, a kitchen/diner with access to the garden, 3 bedrooms and a 3-piece bathroom with wall mounted shower. This property also has driveway parking, garden to the front and rear and no upper chain.

Visit us at
www.pooletownsend.co.uk
enquiries@pooletownsend.co.uk

We are open
 Monday – Friday 9.00 – 5.00
 Saturday 9.00 – 1.00

Barrow 01229 811811
 Ulverston 01229 588111
 Grange 015395 33316
 Kendal 01539 734455
 Milnthorpe 015395 62044