



**POOLE
TOWNSEND**

Stockbridge Court, Ulverston, LA12 7BE

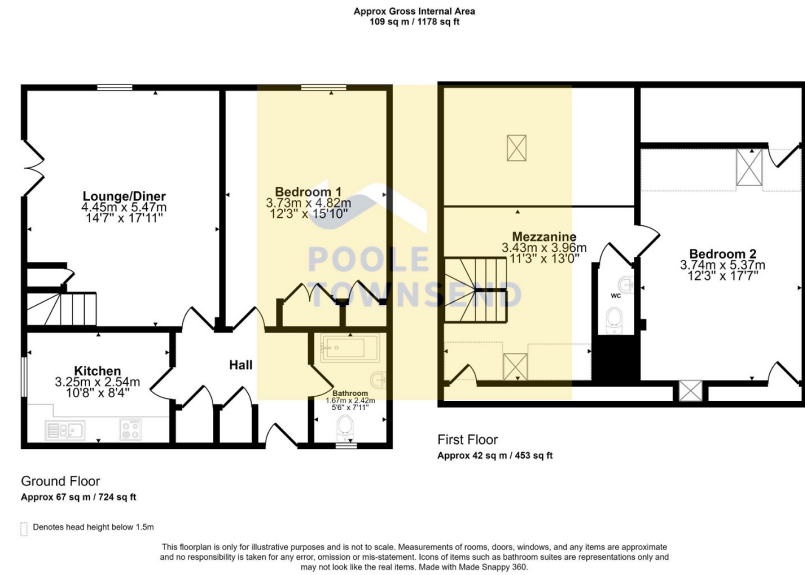
Offers Over £220,000

🛏️ 2 🚿 1 🚗 1

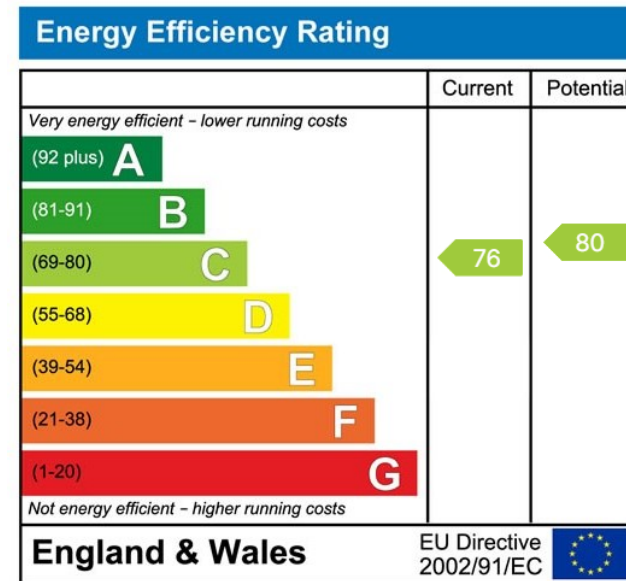


- Stylish Duplex Apartment
- Town Centre Location
- Suitable to a range of buyers
- Fantastic Views
- 2 bedrooms
- Allocated Parking
- No upper chain
- Communal gardens
- Leasehold
- Council tax band B





This 2 storey, purpose built maisonette style apartment is located within a gentle walk from the centre of this vibrant market town. The property will suit many buyers, whether the intention is for a permanent home, second home or rental investment. The external access leads to a private entrance, opening into a central hall where there is a laundry cupboard, access to the open plan living space, breakfast kitchen, bathroom and one of the two impressive bedrooms. The lounge/dining room has a 'Juliet' style balcony and a mezzanine overhead that would lend itself for use as a study space with access to a separate WC and the second bedroom. There are views that skim over the rooftops of the town centre, revealing a glimpse of Hoad, the distant waters of Morecambe Bay and the former Trinity Church across the town. There is a gas central heating system, double glazing, allocated parking space



Visit us at
www.pooletownsend.co.uk
enquiries@pooletownsend.co.uk

We are open
 Monday – Friday 9.00 – 5.00
 Saturday 9.00 – 1.00

Barrow 01229 811811
 Ulverston 01229 588111
 Grange 015395 33316
 Kendal 01539 734455
 Milnthorpe 015395 62044