



**POOLE  
TOWNSEND**



# Great Urswick, Ulverston, LA12 0SX

£210,000

3 1 1



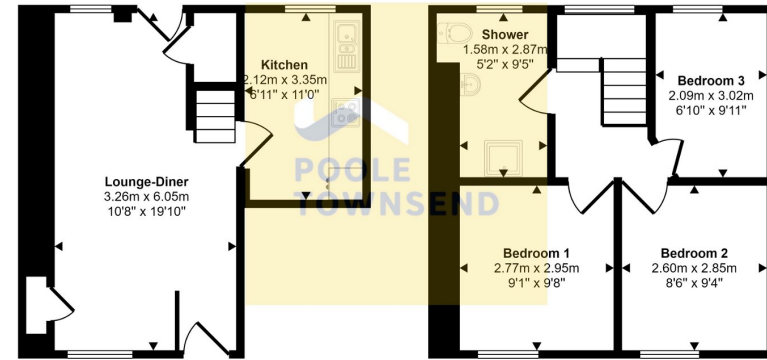


- Cosy 3 Bedroom Cottage
- Lounge With Feature Fireplace
- Peaceful Rural Location
- Council Tax Band B
- Walk In Ready
- Kitchen With Breakfast Bar Area
- Beautiful Views Of The Tarn
- EPC Rating C





Approx Gross Internal Area  
66 sq m / 714 sq ft



Ground Floor  
Approx 30 sq m / 327 sq ft

First Floor  
Approx 36 sq m / 387 sq ft

This floorplan is only for illustrative purposes and is not to scale. Measurements of rooms, doors, windows, and any items are approximate and no responsibility is taken for any error, omission or mis-statement. Icons of items such as bathroom suites are representations only and may not look like the real items. Made with Made Snappy 360.

Nestled in the heart of Great Urswick with views to the village tarn and hills beyond that rise in the distance. This popular South Lakeland village is home to a popular pub/restaurant, church, primary school and village hall. This characterful stone cottage features a generous size lounge/dining room with stove and exposed stonework, lintels and ceiling timbers. The kitchen has been updated and finished with a single run of units with appliances. The bedroom accommodation includes 3 character filled rooms with exposed timbers. The two front bedrooms have a lovely open view over a neighbouring garden to the village tarn. The shower room is spacious and fitted with 3-piece suite. An ideal holiday retreat, primary residence, investment home/Airbnb. Gas CH system, uPVC DG and no upper chain.

Visit us at  
[www.pooletownsend.co.uk](http://www.pooletownsend.co.uk)  
[enquiries@pooletownsend.co.uk](mailto:enquiries@pooletownsend.co.uk)

We are open  
 Monday – Friday 9.00 – 5.00  
 Saturday 9.00 – 1.00

Barrow 01229 811811  
 Ulverston 01229 588111  
 Grange 015395 33316  
 Kendal 01539 734455  
 Milnthorpe 015395 62044