



**POOLE  
TOWNSEND**



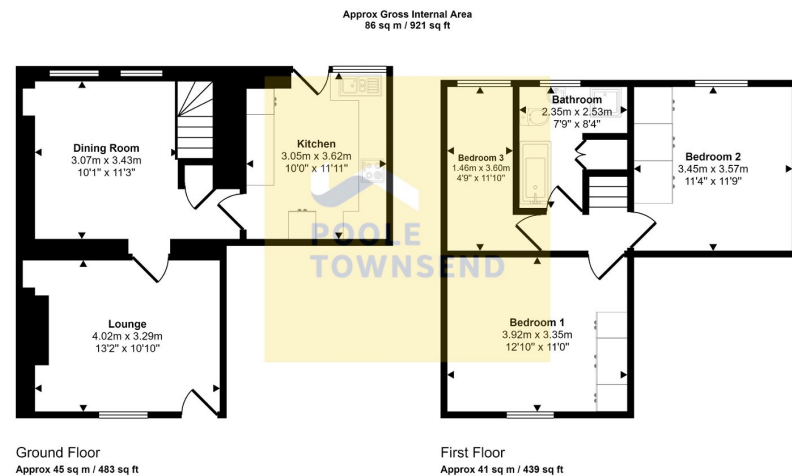
Long Row, Kirkby-in-Furness, Cumbria, LA17 7UP

£250,000

3 1 2



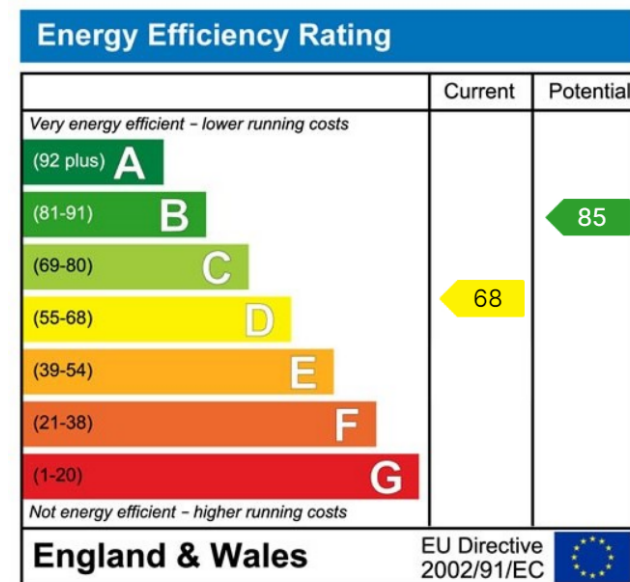




This floorplan is only for illustrative purposes and is not to scale. Measurements of rooms, doors, windows, and any items are approximate and no responsibility is taken for any error, omission or mis-statement. Icons of items such as bathroom suites are representations only and may not look like the real items. Made with Made Snappy 360.



Situated in a wonderful, rural location with fabulous open views to the rear extending towards the Duddon Estuary and distance mountain range. This cottage has a colourful garden to the front and further detached gardens to the rear and off-road parking. The accommodation is nicely proportioned and includes two reception rooms, a fitted kitchen, four piece bathroom plus 3 bedrooms which includes two double rooms. There is UPVC framed double glazing throughout and a gas-fired central heating system. No upper chain.



Visit us at  
[www.pooletownsend.co.uk](http://www.pooletownsend.co.uk)  
[enquiries@pooletownsend.co.uk](mailto:enquiries@pooletownsend.co.uk)

We are open  
 Monday – Friday 9.00 – 5.00  
 Saturday 9.00 – 1.00

Barrow 01229 811811  
 Ulverston 01229 588111  
 Grange 015395 33316  
 Kendal 01539 734455  
 Milnthorpe 015395 62044