



**POOLE
TOWNSEND**

Borrowdale Gardens, Barrow-in-furness, LA14 4LU

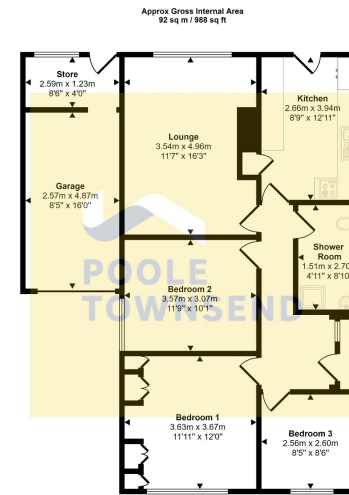
£235,000

3 1 1



- Detached bungalow
- Modern UPVC double glazing, gas-fired central heating system
- Three bedrooms
- Driveway parking leading to a detached garage
- No upper chain
- Nicely appointed and versatile accommodation
- Lovely size lounge overlooking the rear garden
- Three - piece shower room
- Garden to the front and rear
- Council tax band C

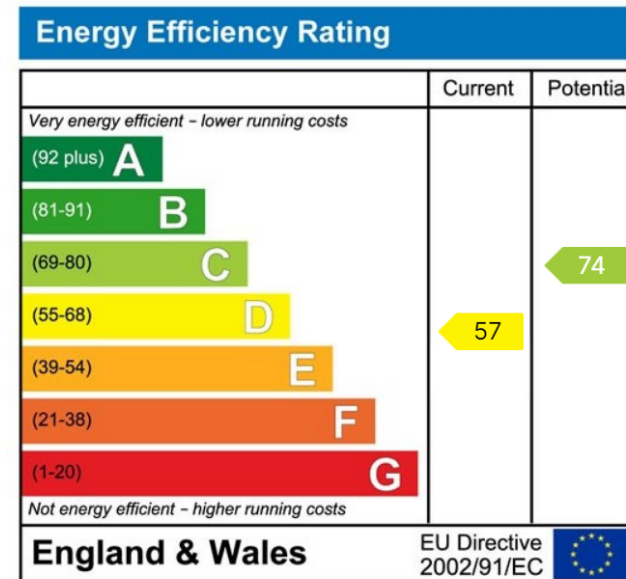




Floorplan

This floorplan is only for illustrative purposes and is not to scale. Measurements of rooms, doors, windows, and any items are approximate and no responsibility is taken for any error, omission or mis-statement. Icons of items such as bathroom suites are representations only and may not look like the real items. Made with Made Snappy 360.

REDUCED* This detached true bungalow offers nicely appointed and versatile accommodation that benefits from modern UPVC framed double glazing and a gas-fired central heating system. There is a lovely size lounge that overlooks the rear garden, three bedrooms, one of which could be used as a dining room if needed plus a three-piece shower room. There is driveway parking leading to a link detached garage and garden to the front and rear. General updating and modernising would improve the property further. No upper chain.



Visit us at
www.pooletownsend.co.uk
enquiries@pooletownsend.co.uk

We are open
 Monday – Friday 9.00 – 5.00
 Saturday 9.00 – 1.00

Barrow 01229 811811
 Ulverston 01229 588111
 Grange 015395 33316
 Kendal 01539 734455
 Milnthorpe 015395 62044