



**POOLE
TOWNSEND**

Westmorland Street, Barrow-in-furness, LA14 5AT

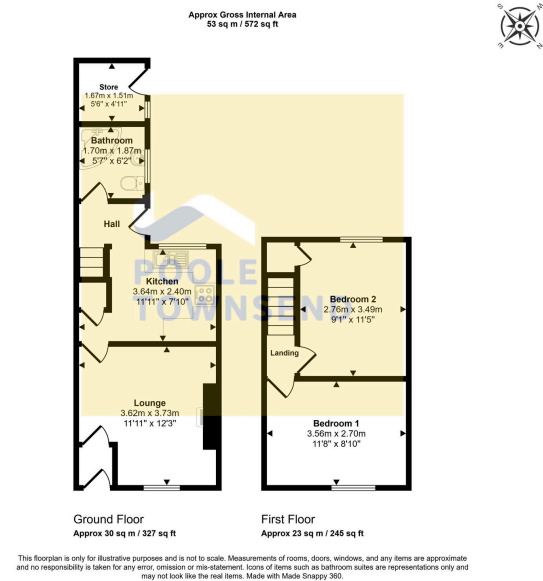
£89,950

2 1 1

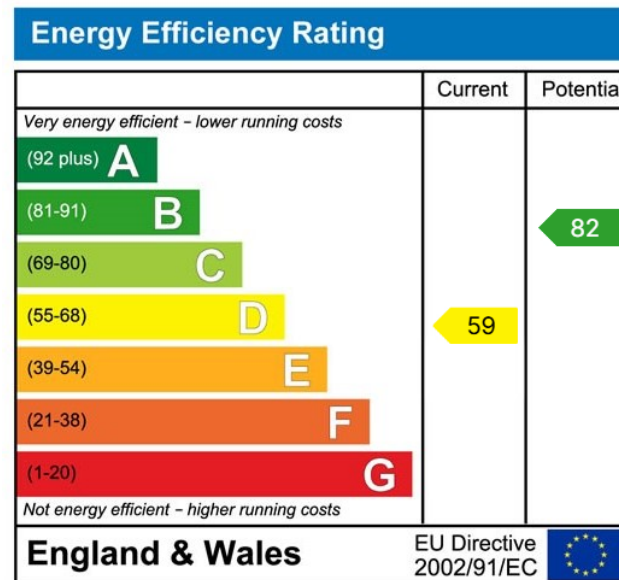


- 2 Bed Mid- Terraced house
- Popular Residential Area
- Close To Local Amenities
- Ideal Investment Opportunity
- Two Good Sized Double Bedrooms
- Walled Yard To Rear
- External Store Shed
- Double Glazing Throughout
- Gas Central Heated
- Council Tax Band - A





NEW! Situated in a popular residential area, only a short distance away from local transport services, shops, pharmacy and Barrow Park. This terraced home will appeal to buyers searching for a permanent or investment property with demand in the current rental market being strong. The accommodation features a lounge, separate kitchen and ground floor bathroom and two good-sized double bedrooms to the first floor. The property has double glazing throughout, a gas-fired central heating system with a modern boiler and a walled yard with external store shed.



Visit us at
www.pooletownsend.co.uk
enquiries@pooletownsend.co.uk

We are open
 Monday – Friday 9.00 – 5.00
 Saturday 9.00 – 1.00

Barrow 01229 811811
 Ulverston 01229 588111
 Grange 015395 33316
 Kendal 01539 734455
 Milnthorpe 015395 62044