



**POOLE
TOWNSEND**

Prince Street, Dalton-In-Furness, LA15 8EU

£120,000

3 2 2



This forecourt fronted terrace is located just outside of the town centre within walking distance of local bus service and convenience store. The accommodation is nicely proportioned and offers buyers the opportunity to update and modernise the living space to their own exact taste. The hallway leads through to the first of two reception rooms which includes a bay fronted lounge and a generous size dining room with sliding door providing access to the kitchen which in turn has stepped access into a breakfast area. The landing leads to the three bedrooms (two double rooms) and a nicely modernised shower room. There is a gas-fired central heating system with a back boiler and a combination of double and single glazed windows. There is a large yard to the rear with outbuilding. No upper chain.

Location

What3Words///tumblers.puns.towns

Description

This terraced home provides family sized accommodation that will appeal to buyers looking for a property that can be upgraded to meet their own personal taste.

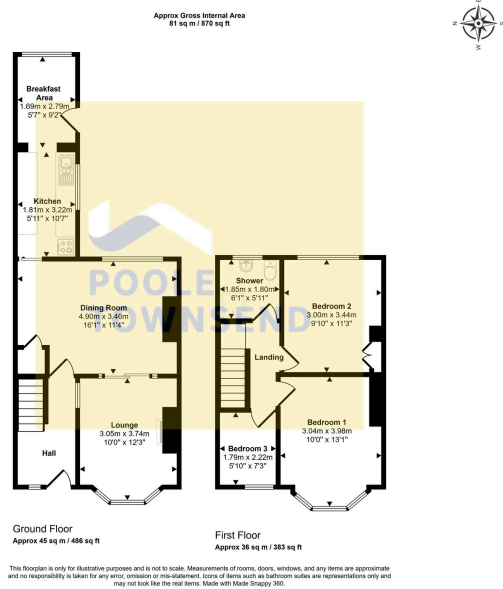
There is stepped access into the hallway with the staircase to your left leading to the first floor and also providing a useful storage cupboard beneath that can accessed from the dining room.

The living space is divided into two separate reception rooms with sliding glass doors providing separation and access between. The lounge has a bay window to the front and a central fireplace with a polished wood effect surround, marble conglomerate inset and hearth and an inset gas fire. The generous size dining room has a large window looking into the yard and a wall mounted gas fire with back boiler installed.

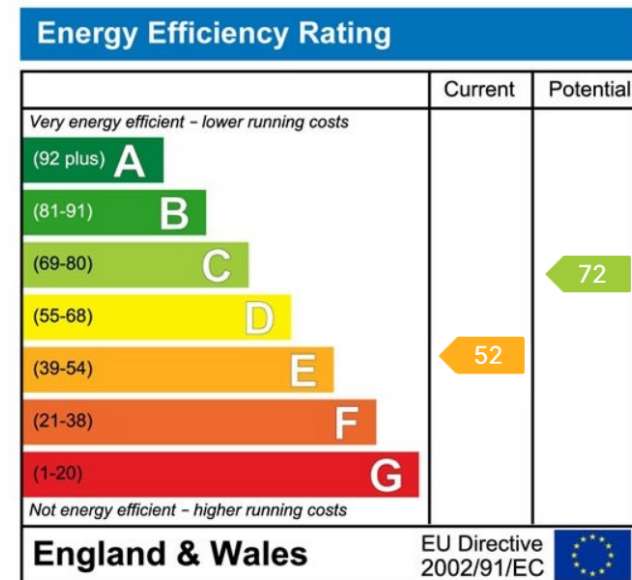
Beyond the living space is the kitchen which is laid out in a double sided, galley style arrangement with a wood effect laminate worktop with inset sink. There is plumbing for a washing machine and space for a freestanding cooker.

There is open access with a single step leading into what is currently





- 3 Bed Mid Forecourt Fronted
- Entrance Hallway Terrace
- Two Reception Rooms
- Bay Fronted Lounge And Dining Room
- Kitchen With Breakfast Area
- Three Bedrooms
- Modernised Shower Room
- Large Yard With Outbuilding
- NO UPPER CHAIN **



Visit us at
www.pooletownsend.co.uk
enquiries@pooletownsend.co.uk

We are open
 Monday – Friday 9.00 – 5.00
 Saturday 9.00 – 1.00

Barrow 01229 811811
 Ulverston 01229 588111
 Grange 015395 33316
 Kendal 01539 734455
 Milnthorpe 015395 62044