



**POOLE
TOWNSEND**

Piel View Grove, Barrow-In-Furness, LA13 0BN

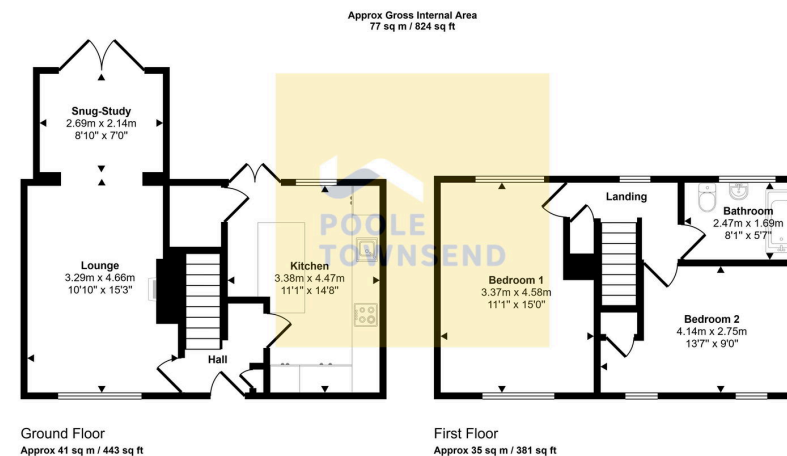
£149,950

🛏 2 🚿 1 🛋 2



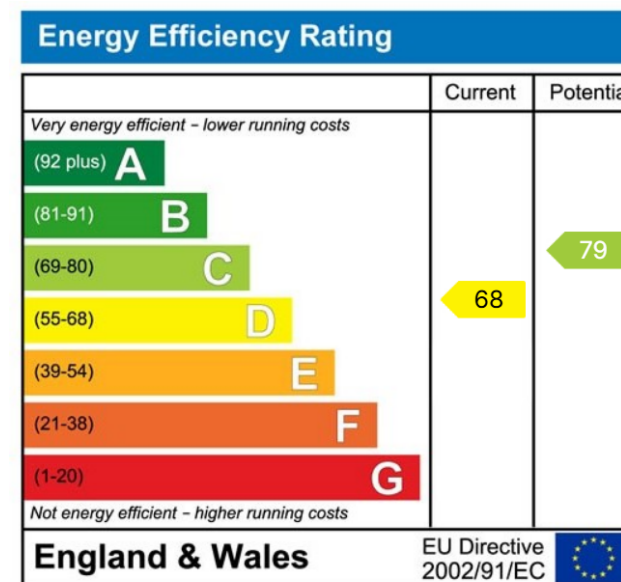
- Modernised Mid-terraced home
- Smartly presented kitchen
- 3-piece bathroom
- Gas-fired central heating system
- Council tax band A
- Lounge area
- Two double bedrooms
- UPVC framed double glazing
- Garden to the rear





This floorplan is only for illustrative purposes and is not to scale. Measurements of rooms, doors, windows, and any items are approximate and no responsibility is taken for any error, omission or mis-statement. Icons of items such as bathroom suites are representations only and may not look like the real items. Made with Made Snappy 360.

NEW This mid-terraced home has been extended, modernised and greatly improved throughout. Set in a slightly elevated position which provides improved privacy from passing traffic and pedestrians, it also allows you to enjoy a pleasant outlook to the front. The lounge features a dual fuel stove, media area and open access to the extended study area where there are double doors accessing the garden. The kitchen is smartly presented, featuring a large peninsula unit/breakfast bar, integrated appliances and direct access to the garden. There are two double bedrooms upstairs and a 3-piece bathroom. The accommodation also benefits from modern upvc DG and a gas-fired central heating system.



Visit us at
www.pooletownsend.co.uk
enquiries@pooletownsend.co.uk

We are open
 Monday – Friday 9.00 – 5.00
 Saturday 9.00 – 1.00

Barrow 01229 811811
 Ulverston 01229 588111
 Grange 015395 33316
 Kendal 01539 734455
 Milnthorpe 015395 62044