



**POOLE
TOWNSEND**

Suffolk Street, Barrow-in-furness, LA13 9QH

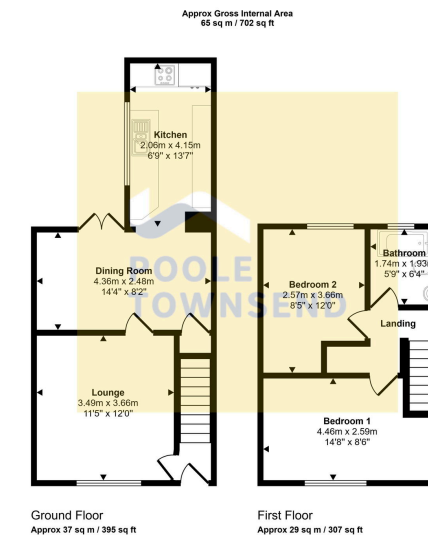
£110,000

🛏️ 2 🚿 1 🛋️ 2



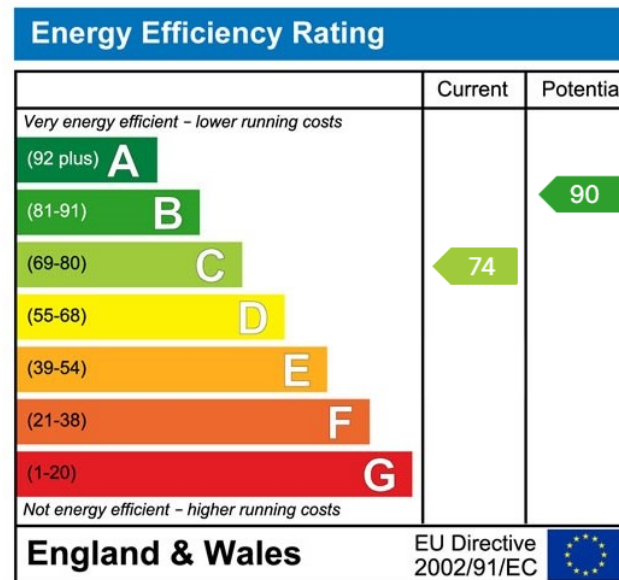
- Beautifully Presented Home • Ideal For First Time Buyers
- Great Investment Opportunity • Stylish Fixtures & Fittings
- Neutral Modern Decor Throughout
- 2 Bedrooms
- UPVC Double Glazing
- 2 Reception Rooms
- Patio Styled Yard To The Rear
- Ga-Fired Central Heating





This floorplan is only for illustrative purposes and is not to scale. Measurements of rooms, doors, windows, and any items are approximate and no responsibility is taken for any error, omission or mis-statement. Icons of items such as bathroom suites are representations only and may not look like the real items. Made with Made Snaggy 360.

NEW: This beautifully presented home will appeal to first-time purchasers, couples and potentially to landlords as a long-term investment opportunity. The nicely appointed accommodation has a light coloured décor throughout and stylish fixtures and fittings to both the kitchen and bathroom areas. There are two reception rooms, one of these rooms has open access to the smartly presented kitchen and double doors opening into a patio style yard. The landing has ladder access into the loft space and doors to the two bedrooms and bathroom. Other features to note about the property: UPVC framed double glazed windows, gas-fired central heating system and roadside parking.



Visit us at
www.pooletownsend.co.uk
enquiries@pooletownsend.co.uk

We are open
 Monday – Friday 9.00 – 5.00
 Saturday 9.00 – 1.00

Barrow 01229 811811
 Ulverston 01229 588111
 Grange 015395 33316
 Kendal 01539 734455
 Milnthorpe 015395 62044