



**POOLE  
TOWNSEND**



# Lumley Street, Barrow - In - Furness, LA14 2EG

£99,950

🛏 2 🚿 1 🛋 1





Located in an established residential area, this fantastic investment opportunity comprises two fully self-contained flats, both benefiting from gas central heating and double glazing throughout. The ground floor flat offers a well-presented one-bedroom layout, featuring a modern fitted kitchen and a contemporary three-piece bathroom, making it ideal for single occupants or couples. The second flat includes a ground floor entrance with hallway and bathroom, leading to the first-floor living space. This upper flat comprises two bedrooms, a spacious living room, and a separate kitchen, perfect for small families or professional tenants. This versatile property would suit buy-to-let investors seeking dual rental income or buyers looking to live in one flat while renting the other. No Chain.

### **Directions**

For Satnav users enter: LA14 2EG

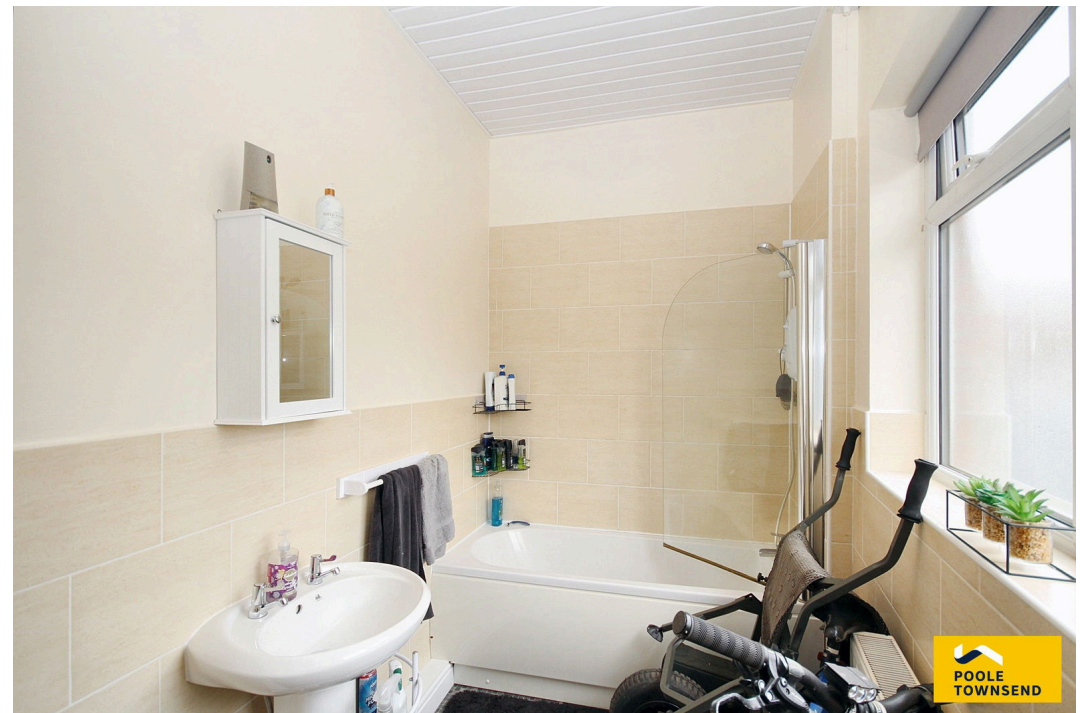
For what3words app users enter: fend.admire.full

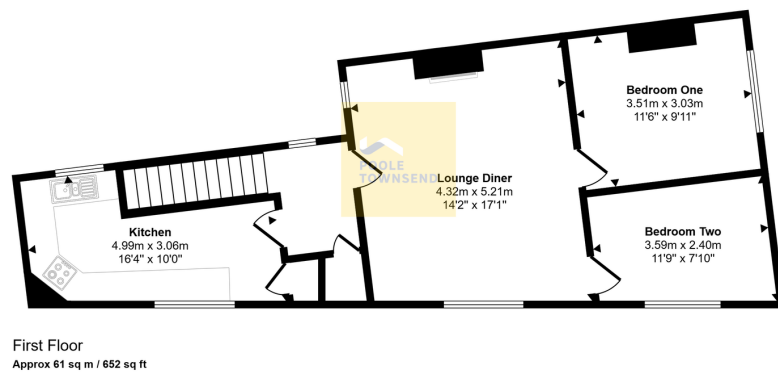
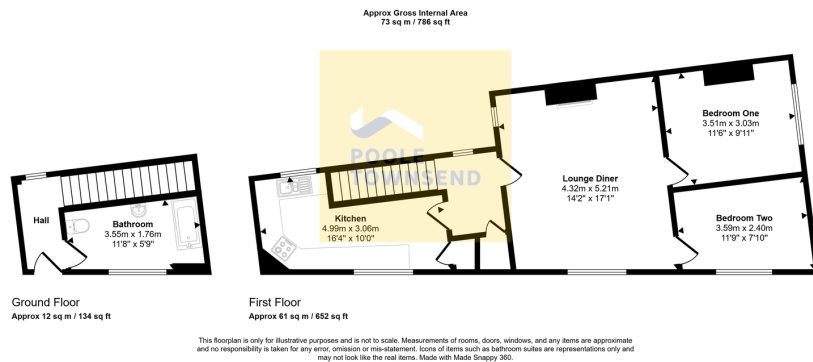
### **Location**

This well-established residential area is popular among a wide range of buyers—including first-time purchasers, young families, and landlords seeking investment opportunities. Conveniently located just a short distance from the town centre, the property benefits from easy access to local bus services, primary schools, and a variety of convenience stores and corner shops. The town itself offers a vibrant mix of independent retailers and well-known supermarkets, catering to all day-to-day needs and lifestyle preferences.

### **Description**

The ground floor flat is accessed via an enclosed porch, offering convenient space for coats and shoes. An internal door opens into a spacious lounge/diner, which flows seamlessly into the adjoining kitchen, bedroom, and bathroom. The generous size of the reception area allows for a flexible layout to comfortably accommodate both living and dining furniture.





- Two Fully Self-Contained Flats
- Established Residential Area
- Ground Floor Flat - One Bedroom, Modern Kitchen, Three-Piece Bathroom
- First Floor Flat - Spacious Living Area, Two Bedrooms, Separate Kitchen
- Ground Floor Entrance Hall With Bathroom For First Floor Flat
- Communal Rear Yard
- Double Glazing Throughout
- Gas Central Heating Throughout
- To Be Sold Together
- No Chain

Visit us at  
[www.pooletownsend.co.uk](http://www.pooletownsend.co.uk)  
[enquiries@pooletownsend.co.uk](mailto:enquiries@pooletownsend.co.uk)

We are open  
 Monday – Friday 9.00 – 5.00  
 Saturday 9.00 – 1.00

Barrow 01229 811811  
 Ulverston 01229 588111  
 Grange 015395 33316  
 Kendal 01539 734455  
 Milnthorpe 015395 62044