



**POOLE
TOWNSEND**

James Street, Barrow-In-Furness, LA14 1EQ

£69,950

🛏 2 🚿 1 🛋 1



Centrally located in the town and within close proximity of shops, cafes/pubs and takeaway food etc. The property will appeal to buyers seeking a house that can be improved through modernising and upgrading. The accommodation features a bay windowed lounge, kitchen and utility porch with a modern gas-fired boiler. There are two bedrooms to the first floor with a central bathroom. There is a walled yard to the rear and no upper chain.

Location

What3Words///caring.fills.cups

Description

This bay windowed terrace offers lots of potential for any buyer's searching for a home that can be upgraded.

The entrance door opens directly into the lounge which has a large bay window that floods the room with natural light. There is a wall mounted electric fire with pebble detailing, open access onto the central staircase and a door leading into the kitchen.

Fitted wall and base cabinets that have a wood effect finish to the panelled doors and a contrasting coloured laminate worktop which incorporates a single drainer sink and also a four plate electric hob with a wall mounted cooker hood fitted above. There is also an integrated oven with grill. Further storage is available within the under stair cupboard and also within the adjacent utility area where there is plumbing for a washing machine and space for a fridge freezer. There is stepped access into the walled yard where there is an outbuilding.

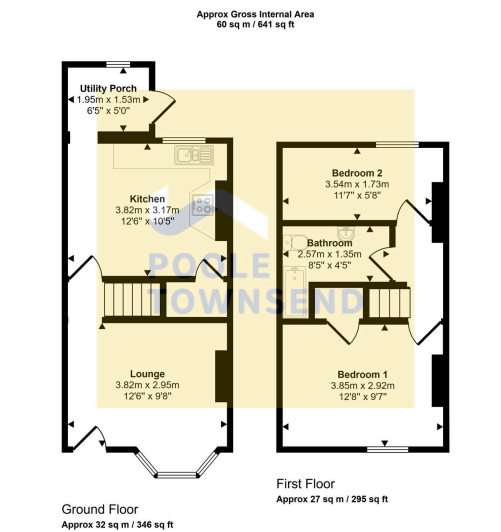
The landing provides separate access to the two bedrooms and to the central bathroom which has a three-piece suite with an electric shower installed over the bath.

The property also features UPVC framed windows throughout, a gas-fired central heating system with an Ideal boiler and no upper chain.

Tenure

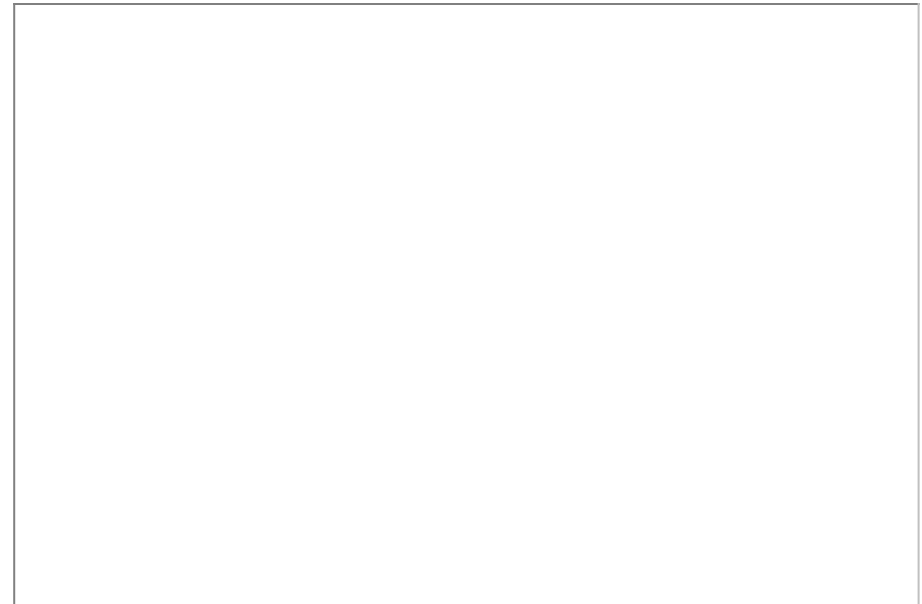
Freehold





This floorplan is only for illustrative purposes and is not to scale. Measurements of rooms, doors, windows, and any items are approximate and no responsibility is taken for any error, omission or mis-statement. Icons of items such as bathroom suites are representations only and may not look like the real items. Made with Made Snappy 360.

- Mid Terraced Home
- Forecourted
- Lounge
- Kitchen Diner
- Utility/Porch To Rear
- Two Bedrooms
- Three Piece Family Bathroom
- Double Glazing & Gas Central Heating
- NO CHAIN
- COUNCIL TAX BAND- A



Visit us at
www.pooletownsend.co.uk
enquiries@pooletownsend.co.uk

We are open
 Monday – Friday 9.00 – 5.00
 Saturday 9.00 – 1.00

Barrow 01229 811811
 Ulverston 01229 588111
 Grange 015395 33316
 Kendal 01539 734455
 Milnthorpe 015395 62044