



**POOLE
TOWNSEND**

Woodland Park, Barrow-in-Furness, LA14 5XR

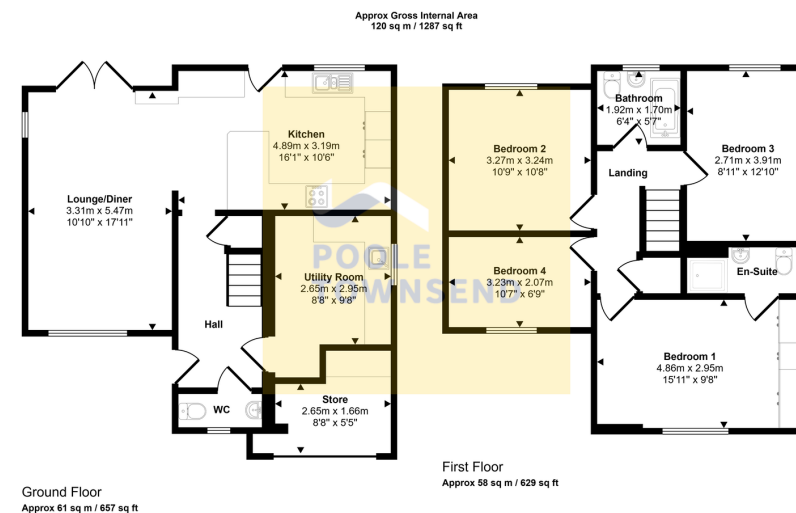
£350,000

4 2 1

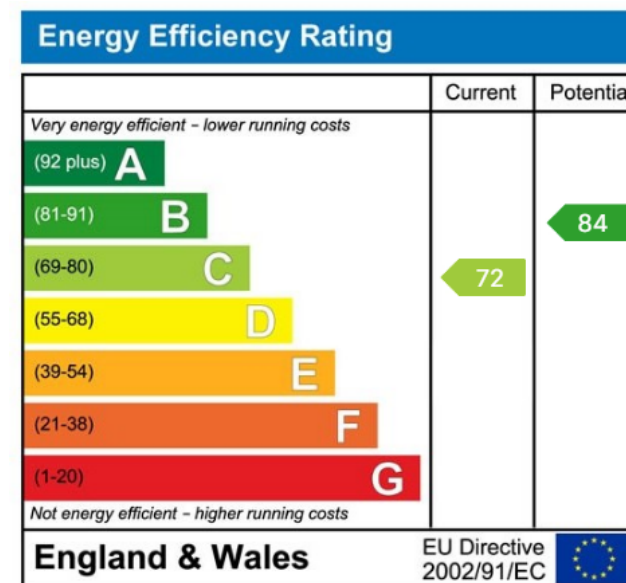


- Stunning family home
- Free-flowing open plan living
- cloakroom/WC and laundry/ utility room
- 4 bedrooms
- Family size bathroom
- Off road parking for 3 vehicles
- UPVC framed double glazing
- Gas-fired central heating system
- Landscaped garden





NEW This is a stunning family home that has been upgraded and finished to an immaculate standard throughout, presenting free-flowing open plan living with a contemporary kitchen with breakfast bar, appliances and direct access to the landscaped garden. There is also a ground floor cloakroom/WC and laundry/utility room. The landing leads to 4 bedrooms including a master bedroom with fitted furniture and an en-suite shower room. There is an equally smart family bathroom which includes a Jacuzzi style bath. There is off-road parking for at least three vehicles, UPVC framed double glazing throughout and a gas-fired central heating system. An ideal location for any family with schools and bus service close by.



Visit us at
www.pooletownsend.co.uk
enquiries@pooletownsend.co.uk

We are open
 Monday – Friday 9.00 – 5.00
 Saturday 9.00 – 1.00

Barrow 01229 811811
 Ulverston 01229 588111
 Grange 015395 33316
 Kendal 01539 734455
 Milnthorpe 015395 62044