



**POOLE  
TOWNSEND**



Rawlinson Street, Barrow-in-furness, LA14 1ED

£69,950

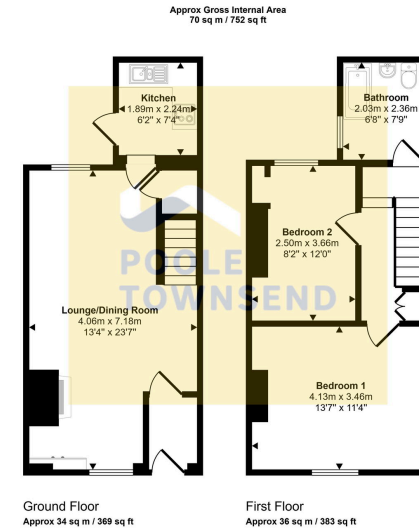
🛏 2 🚿 1 🛋 2





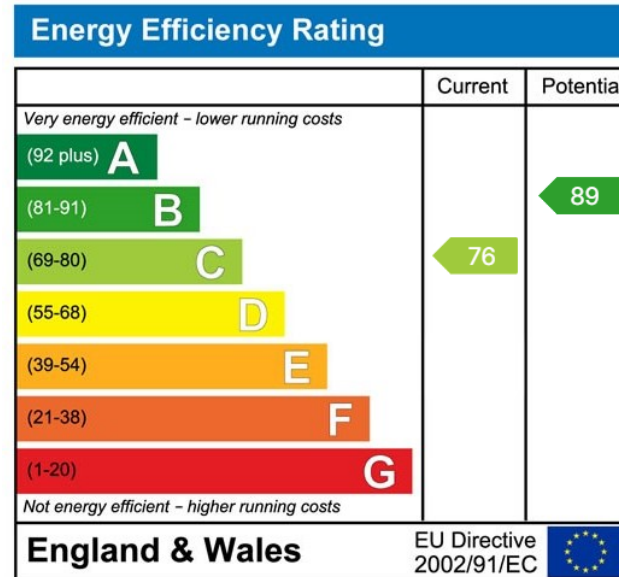
- Popular location
- Open plan living space
- Spacious bathroom
- Gas-fired central heating system
- Walled yard
- Upgraded terraced home
- Modern fitted kitchen
- 2 Bedrooms
- UPVC framed double glazing
- No upper chain





This floorplan is only for illustrative purposes and is not to scale. Measurements of rooms, doors, windows, and any items are approximate and no responsibility is taken for any error, omission or mis-statement. Icons of items such as bathroom suites are representations only and may not look like the real items. Made with Made Snappy 360.

NEW Situated in a busy and popular location just outside of the town centre, this upgraded terraced home provides accommodation that is ready to move into immediately. The living space is open plan, forming a generous size lounge/ dining room with stepped access into a modern fitted kitchen. The landing leads to a spacious bathroom and to the two bedrooms which includes a double room at the front of the house with fitted furniture. The property also features a gas-fired central heating system, UPVC framed double glazing, a walled yard and no upper chain.



Visit us at  
[www.pooletownsend.co.uk](http://www.pooletownsend.co.uk)  
[enquiries@pooletownsend.co.uk](mailto:enquiries@pooletownsend.co.uk)

We are open  
 Monday – Friday 9.00 – 5.00  
 Saturday 9.00 – 1.00

Barrow 01229 811811  
 Ulverston 01229 588111  
 Grange 015395 33316  
 Kendal 01539 734455  
 Milnthorpe 015395 62044