



**POOLE
TOWNSEND**

Clive Street, Barrow-in-furness, LA14 1YD

£138,500

4 1 1



Situated just outside of the town centre and within walking distance of the local retail parks, this deceptively spacious home will appeal to families and to couples who are looking for a house that they can grow into. The property is well presented and would make an ideal home or possible buy to-let investment. There is a nicely proportioned lounge, open plan dining kitchen with modern fitted units, ground floor WC, four bedrooms and a three-piece bathroom. There is an enclosed garden to the rear with an outbuilding for general storage. The property also benefits from having a gas-fired central heating system and double glazing to all but one window. No upper chain.

Location

What3Words///calls.knots.mugs

Description

This property will stand out to younger buyers, families and potentially buy to-let investors.

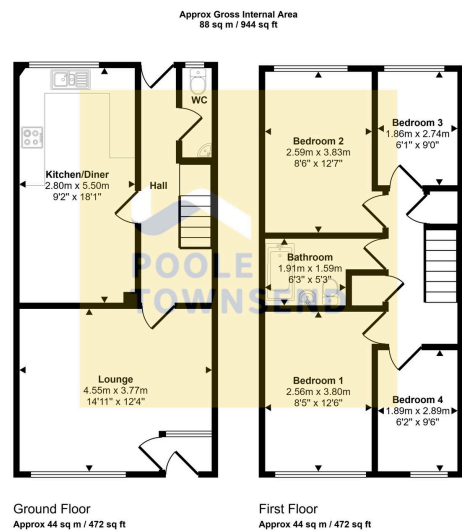
The property overlooks a pedestrianised area with areas of grass and brick set walkways.

The living accommodation is nicely appointed with an entrance vestibule leading directly into the naturally light lounge which has a large window to the front elevation and a wall mounted electric fire.

Beyond the lounge is a long hallway where there is open access onto the stairwell, a rear access door leading into the garden and further doors leading into the ground floor WC and to the open plan kitchen/ dining room.

This dual purpose room provides a comfortable dining space alongside the kitchen where there are a range of modern fitted units and drawers with a wood effect laminate worktop that incorporates a single drainer sink with mixer tap. There is an integrated fan assisted oven with gas hob and cooker hood, plumbing for a washing machine and space for a clothes dryer and fridge freezer. The boiler is concealed within the cupboard alongside the rear facing window.





This floorplan is only for illustrative purposes and is not to scale. Measurements of rooms, doors, windows, and any items are approximate and no responsibility is taken for any error, omission or mis-statement. Icons of items such as bathroom suites are representations only and may not look like the real items. Made with Made Snappy 360.



Visit us at
www.pooletownsend.co.uk
enquiries@pooletownsend.co.uk

We are open
 Monday – Friday 9.00 – 5.00
 Saturday 9.00 – 1.00

Barrow 01229 811811
 Ulverston 01229 588111
 Grange 015395 33316
 Kendal 01539 734455
 Milnthorpe 015395 62044