

Woodland Park, Barrow-in-furness, LA14 5XR

£275,000

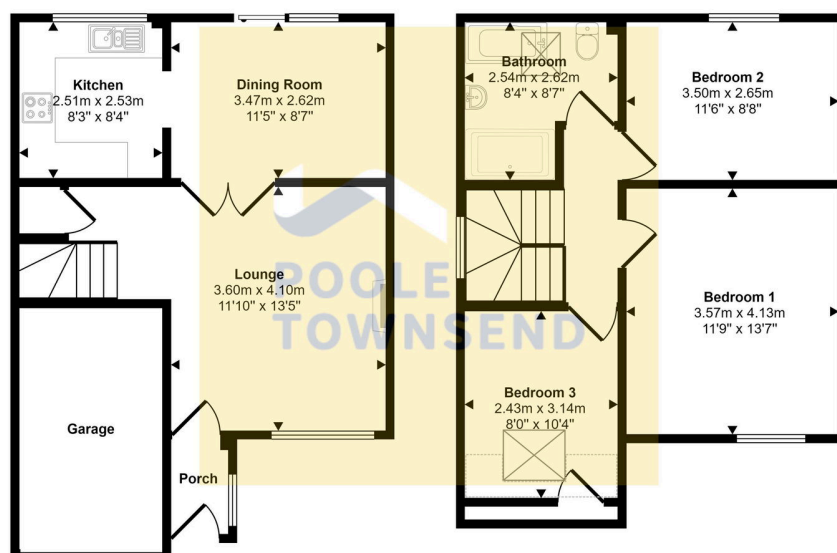
 3  1  2



- Beautifully presented home
- Open-plan garden area
- Enclosed garden to the rear
- Smartly presented kitchen
- Fabulous 4-piece bathroom
- Lovely cul-de-sac location
- Driveway
- Generous size lounge
- 3 double bedrooms
- Gas-fired central heating system



Approx Gross Internal Area
96 sq m / 1028 sq ft



NEW This is a beautifully presented family home that offers stylish and tastefully decorated accommodation throughout. Nicely situated in a lovely cul-de-sac location, the property also features an open plan garden area and driveway to the front and private, enclosed garden to rear with a lawn and patio. The accommodation comprises; a generous size lounge with double doors opening into a family dining room where there is an archway to a smartly presented kitchen and also patio doors providing access into the garden. The landing leads to 3 double bedrooms and a fabulous four piece bathroom with freestanding bath and independent shower area. There is also an integrated garage, UPVC framed double glazing, a gas-fired central heating system and glimpses of the Irish Sea.