



**POOLE  
TOWNSEND**

Newport Street, Barrow-in-furness, LA14 5DE

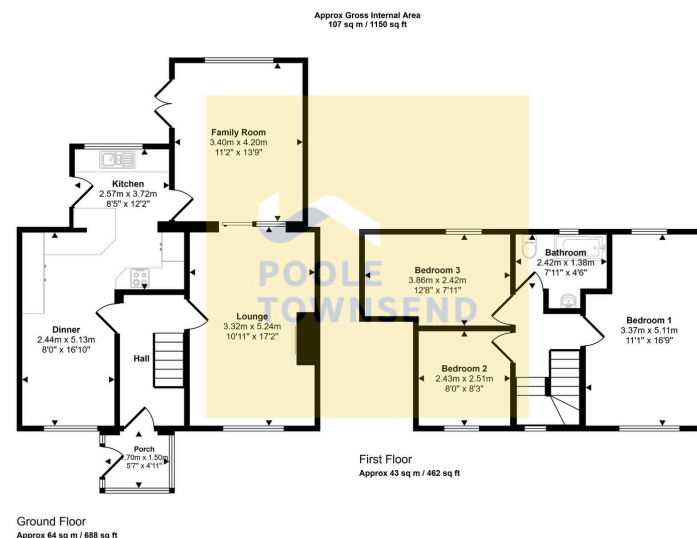
£190,000

3 1 2

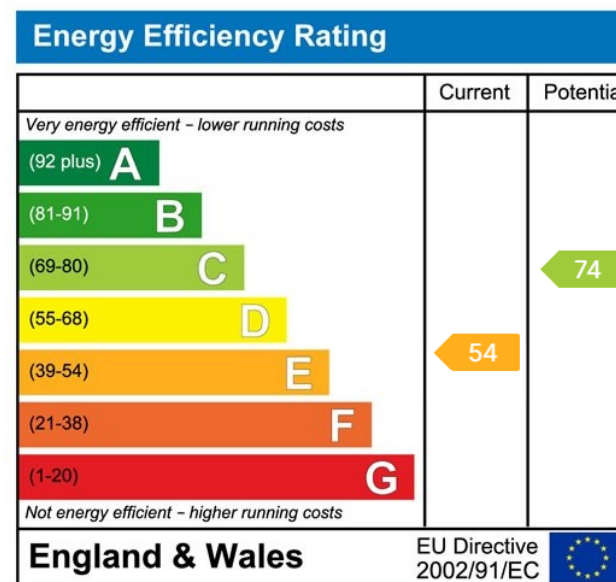


- Popular residential location
- Off-road parking
- Garden to the rear
- 2 Reception rooms
- Open plan kitchen and dining
- 3 Bedrooms room
- 3 Piece bathroom
- Gas-fired central heating system
- UPVC framed double glazing
- Array of solar pannels





NEW This mid-terraced home is situated in a popular residential location and features off-road parking to the front and colourful, south westerly facing garden to the rear. This extended home offers excellent accommodation that comprises: two reception rooms, one with direct access to the garden, an open plan kitchen and dining room, three bedrooms and a three piece bathroom. Other features to note about this property are that it has a gas-fired central heating system, UPVC framed double glazing and an array of solar PV panels to the south-westerly facing roof.



Visit us at  
[www.pooletownsend.co.uk](http://www.pooletownsend.co.uk)  
[enquiries@pooletownsend.co.uk](mailto:enquiries@pooletownsend.co.uk)

We are open  
 Monday – Friday 9.00 – 5.00  
 Saturday 9.00 – 1.00

Barrow 01229 811811  
 Ulverston 01229 588111  
 Grange 015395 33316  
 Kendal 01539 734455  
 Milnthorpe 015395 62044