



**POOLE  
TOWNSEND**

# Teasdale Road, Walney, Barrow-in-Furness, LA14 3SF

£145,000

3 1 1



This bay front home will appeal to couples and also family buyers. The spacious and open plan living space incorporates a lounge with dining area alongside and a separate kitchen to the rear. There are 3 double bedrooms upstairs with a modern bathroom featuring a shower over the bath. There are decorative fireplaces, gas fired central heating and double glazing. The forecourt garden offers a space to relax whilst the enclosed yard offers ample space for drying clothes etc. There is an attached workshop/store and no upper chain.

### Location

whats3words///nobody.chimp.combining

### Description

Nicely located in an established residential area, this forecourt fronted home will suit many purchasers, particularly couples and families.

The open plan reception space is accessed from the hallway and provides a lounge with decorative fireplace and the bay window overlooking the front garden. The adjacent dining space is of similar proportions with access to the kitchen and also to a useful under stair cupboard.

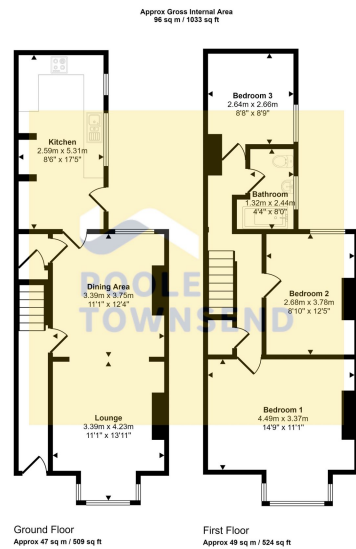
The kitchen is spacious, offering lots of fitted storage and plenty of work surface for food preparation. There is an integrated oven with grill, a gas hob and concealed cooker hood, plumbing for a washing machine and space for a fridge/freezer.

The landing has a fitted storage cupboard and doors leading to the bathroom and all 3 of the double bedrooms, the largest being at the front of the house.

The modern bathroom has a white suite with an electric shower installed over the bath.

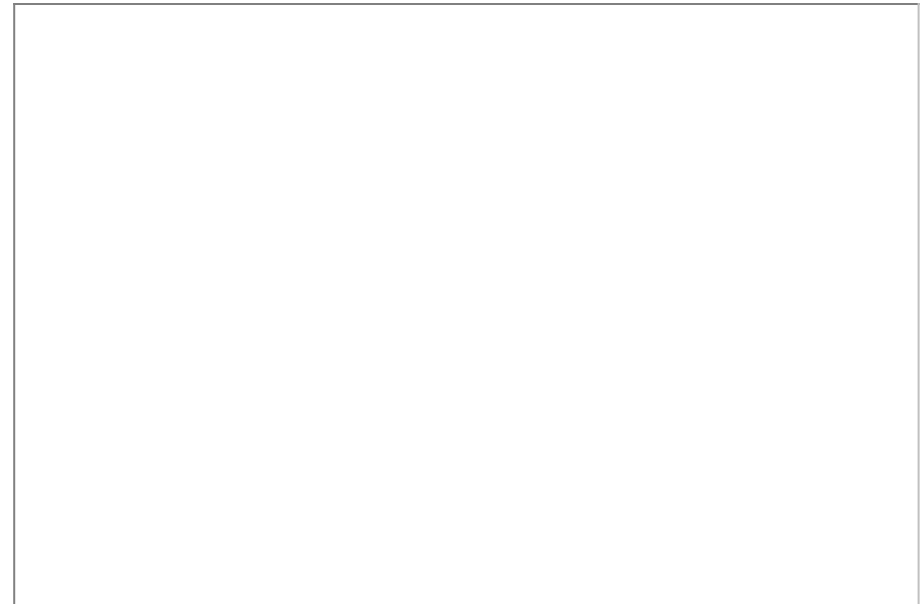
The galley style yard has gated access at the rear. The property also has a workshop/store that is attached to the back of the house.





This floorplan is only for illustrative purposes and is not to scale. Measurements of rooms, doors, windows, and any items are approximate and no responsibility is taken for any errors, omissions or misstatements. Icons of items such as bathroom suites are representations only and may not look like the real items. Made with Made Easy 360.

- Bay Front
- Spacious open plan living
- Modern fitted bathroom
- Gas-fired central heating
- Forecourt garden
- Appeal to couples and families
- 3 Double bedrooms
- Decorative fireplace
- Double glazing
- Attached workshop



Visit us at  
[www.pooletownsend.co.uk](http://www.pooletownsend.co.uk)  
[enquiries@pooletownsend.co.uk](mailto:enquiries@pooletownsend.co.uk)

We are open  
 Monday – Friday 9.00 – 5.00  
 Saturday 9.00 – 1.00

Barrow 01229 811811  
 Ulverston 01229 588111  
 Grange 015395 33316  
 Kendal 01539 734455  
 Milnthorpe 015395 62044