



**POOLE
TOWNSEND**

10 Dartmouth Street, Walney

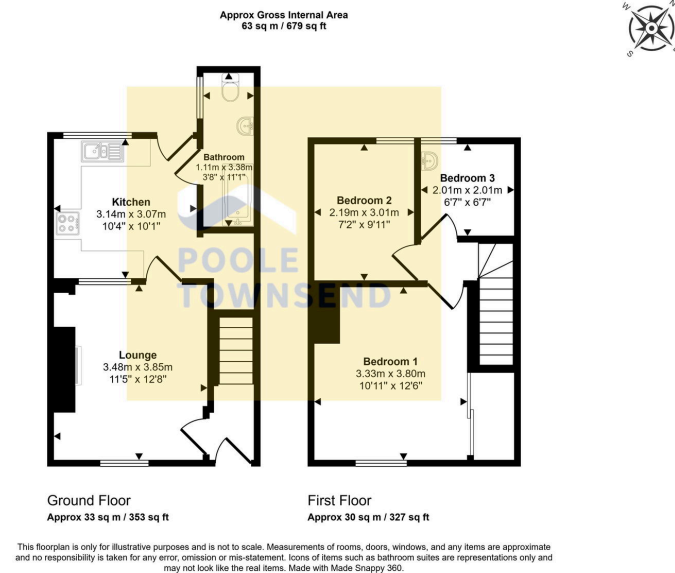
£95,000

3 1 1



- Popular Residential Location
- Extended Accommodation
- Ground Floor Bathroom
- Gas Central Heating
- UPVC Double Glazing
- No Upper Chain
- 3 Bedrooms
- Ideal for investors/ First Time Buyers
- EPC - TBC
- Council Tax Band A





This mid-terraced home is situated in a popular location that is sought after by younger buyers, couples and investors. The property has been extended which has improved the accommodation that now features a lounge with central fireplace, fitted kitchen, ground floor bathroom and three bedrooms to the first floor. There is a gas-fired central heating system with a modern Ideal boiler, UPVC framed double glazing, a walled yard and garage. No upper chain.

Visit us at
www.pooletownsend.co.uk
enquiries@pooletownsend.co.uk

We are open
 Monday – Friday 9.00 – 5.00
 Saturday 9.00 – 1.00

Barrow 01229 811811
 Ulverston 01229 588111
 Grange 015395 33316
 Kendal 01539 734455
 Milnthorpe 015395 62044