



**POOLE
TOWNSEND**

Ashworth Street, Dalton-In-Furness, LA15 8SH

£149,950

3 2 1



This beautifully presented and superbly upgraded home is located just a short distance away from the town centre within a short walk of local schools and leisure centre. The property has also benefited from being extended to the rear as well as having a converted loft that now forms bedroom three. The living accommodation is open plan with the lounge/dining area leading to an extended kitchen and ground floor cloakroom with laundry facilities. The first floor has been reconfigured slightly to provide access to 2 bedrooms, a dressing room and a luxurious 4-piece bathroom. There is an enclosed staircase from the landing ascending up to the loft which has a dormer window extension to the front. There is a gas-fired central heating system, UPVC framed double glazing, forecourt area to the front and a private patio style garden to the rear.

Location

What3Words///incurs.agency.mascots

Description

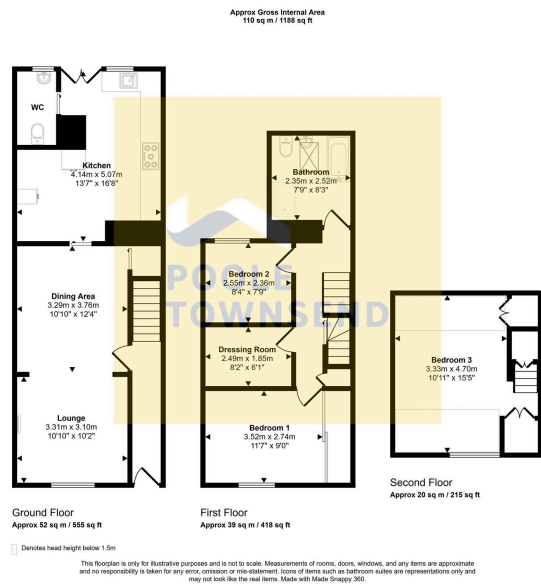
Set in a slightly elevated position with a fully enclosed forecourt garden to the front, this beautifully presented, extended home will appeal to a wide audience, particularly to couples and to family buyers.

The hallway leads you through to the open plan lounge/dining room which is superbly proportioned and features a contemporary style gas fire to the lounge area and decorative acoustic style panelling to a single wall within the dining space.

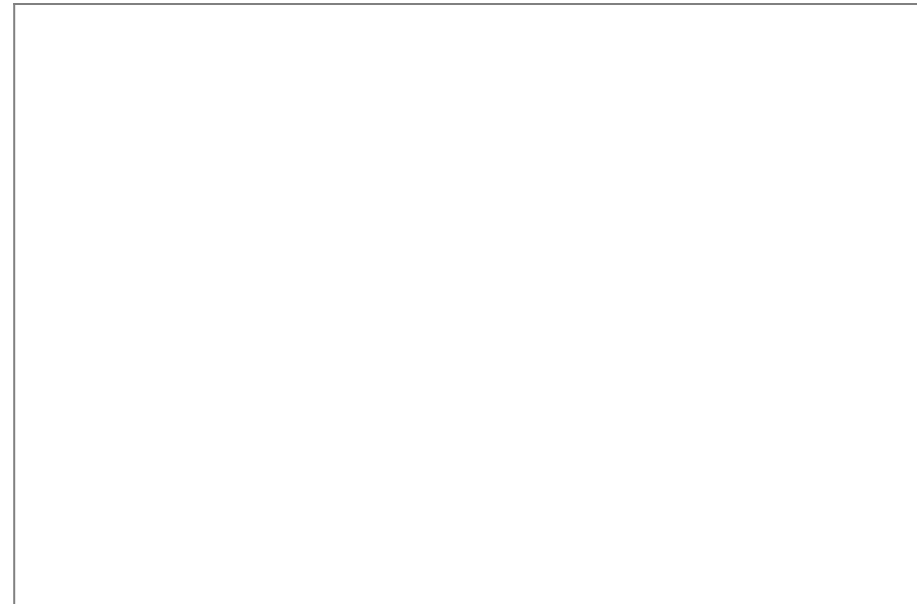
There is a sliding door with single stepped access into the kitchen which has been upgraded and also extended to create a much more usable space that can comfortably accommodate the demands of modern living. There are plenty of fitted cupboards and drawers with a grey coloured panelled front with fingertip style handles and a contrasting coloured work surface. There is a gas hob, an integrated oven, microwave and housing to accommodate an American style fridge freezer.

There are glazed double doors opening into the garden which is paved and offers a nice space to enjoy the fresh air. The WC is also accessed from the kitchen. The room also has a laundry area where





- Beautifully Presented Property
- Extended Rear And Converted Loft
- Open Plan Lounge And Dining Area
- Ground Floor Cloackroom And Laundry Facilities
- Forecourt Area And Rear Patio Area
- Popular Location
- Three Bedrooms
- Extended Kitchen
- Four Piece Bathroom
- UPVC Double Glazing And Gas Fired Central Heating



Visit us at
www.pooletownsend.co.uk
enquiries@pooletownsend.co.uk

We are open
 Monday – Friday 9.00 – 5.00
 Saturday 9.00 – 1.00

Barrow 01229 811811
 Ulverston 01229 588111
 Grange 015395 33316
 Kendal 01539 734455
 Milnthorpe 015395 62044