



**POOLE
TOWNSEND**

Buccleuch Court, Barrow-in-Furness, LA14 1TD

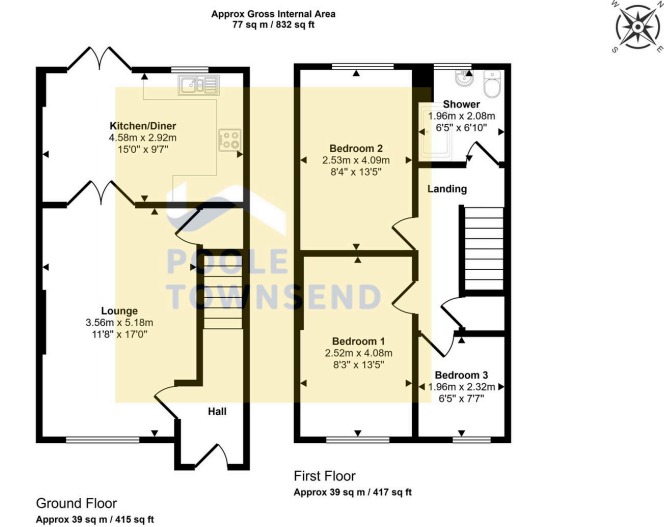
£140,000

3 1 1



- Modern home
- Lounge area
- Glazed doors
- 3 Bedrooms
- Allocated parking
- Solar photovoltaic panels
- Dining kitchen
- Lovely relaxing garden space
- Upgraded shower room
- UPVC framed double-glazing





This floorplan is only for illustrative purposes and is not to scale. Measurements of rooms, doors, windows, and any items are approximate and no responsibility is taken for any error, omission or mis-statement. Icons of items such as bathroom suites are representations only and may not look like the real items. Made with Made Snappy 360.

NEW This modern, mews style home forms part of a small development of similar properties that is only a short walk away from the town centre and bus/rail links. The property has benefitted from a large investment to install solar photovoltaic panels with battery storage/back up. The accommodation features a good size lounge with double doors opening into the dining kitchen where there are glazed doors opening into the garden that offers a lovely space to relax. The landing leads to the three bedrooms and the smartly upgraded shower room. Further features to note are; upvc framed double-glazing, a gas-fired central heating system and allocated parking.

Visit us at
www.pooletownsend.co.uk
enquiries@pooletownsend.co.uk

We are open
 Monday – Friday 9.00 – 5.00
 Saturday 9.00 – 1.00

Barrow 01229 811811
 Ulverston 01229 588111
 Grange 015395 33316
 Kendal 01539 734455
 Milnthorpe 015395 62044