



**POOLE
TOWNSEND**

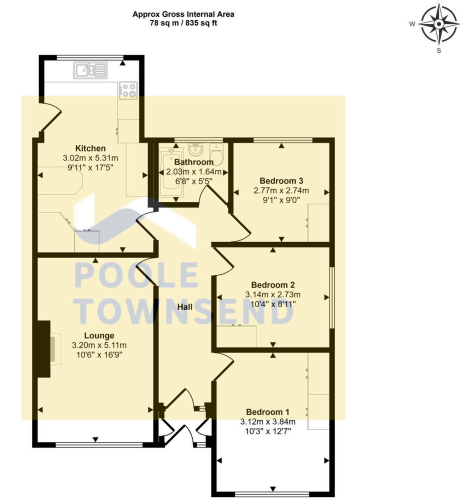
Kentmere Crescent, Barrow-in-Furness, LA14 4NL
£295,000

3 1 1



- Detached Bungalow
- Popular Residential Location
- Gas Central Heating
- Garden Front & Rear
- Driveway
- Extended Kitchen
- Vast Loft Space - Potential For Development (subject to planning)
- UPVC Double Glazing
- Detached Garage
- EPC - TBC

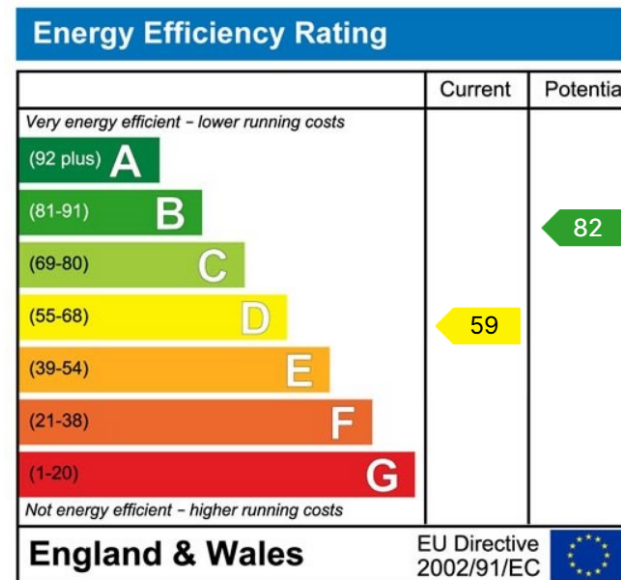




Floorplan

This floorplan is only for illustrative purposes and is not to scale. Measurements of rooms, doors, windows, and any items are approximate and no responsibility is taken for any error, omission or mis-statement. Icons of items such as bathroom suites are representations only and may not look like the real items. Made with Made Snaggy 360.

Located in the sought after area of Hawcoat, this detached bungalow offers nicely appointed accommodation that comprises: a spacious lounge that overlooks the garden, extended kitchen with breakfast table, three bedrooms and a three-piece bathroom with shower attachment to the taps. The property has a vast loft space that offers potential for development subject to all the relevant permissions etc There is also a modern gas-fired central heating boiler located in the loft, upvc framed double glazing throughout, garden to the front and rear plus driveway parking and a detached garage.



Visit us at
www.pooletownsend.co.uk
enquiries@pooletownsend.co.uk

We are open
 Monday – Friday 9.00 – 5.00
 Saturday 9.00 – 1.00

Barrow 01229 811811
 Ulverston 01229 588111
 Grange 015395 33316
 Kendal 01539 734455
 Milnthorpe 015395 62044