

Old Farm Close, Barrow-in-furness, LA14 4JG

£465,000

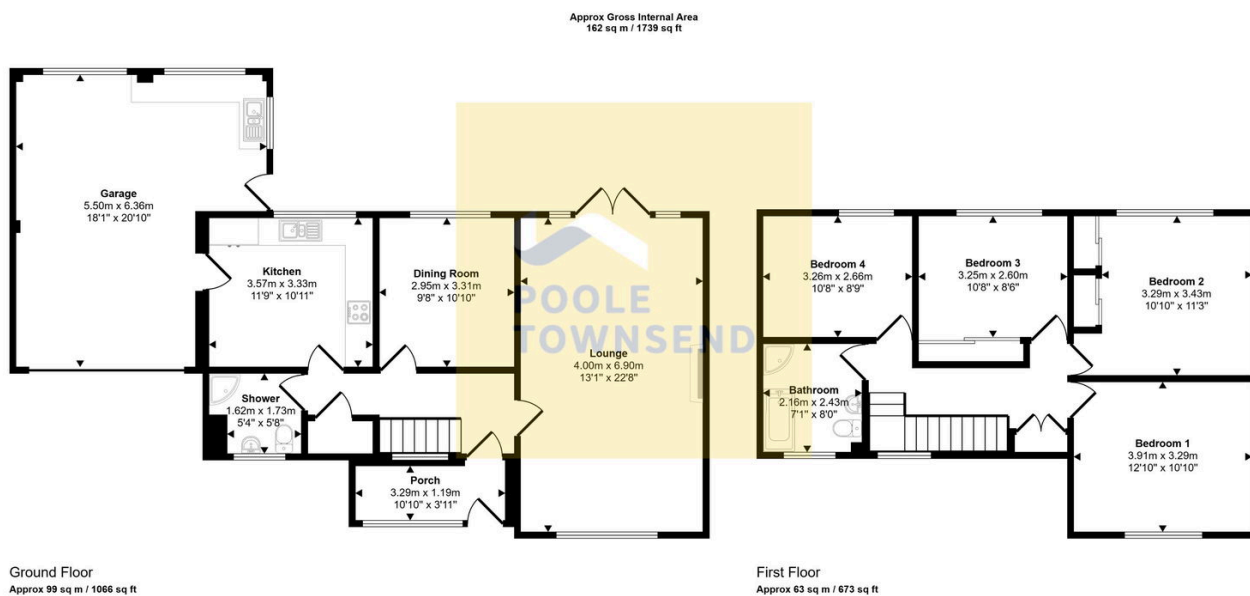
 4  2  2



This wonderful detached home is situated in a desirable location with open, panoramic views to the rear over farmland to the Irish Sea and distant West Cumbrian Coast. The accommodation is immaculately presented throughout, featuring an attached porch, entrance hall with stairs and doors leading to 2 reception rooms, fitted kitchen with breakfast area and shower room. The landing has a fitted cupboard, loft access and doors to 4 double bedrooms and a four-piece bathroom with a roll top bath and independent shower cubicle. The property is set on a generous plot with parking for several cars, an attached garage, lawn and also an established fruit/vegetable garden. The property also features a gas-fired central heating system and UPVC framed double glazing.

Key Features

- Detached Family Home
- Two Reception Rooms
- Ground Floor W/C
- Large Garage
- FREEHOLD
- Four Bedrooms
- Spacious Lounge
- Four Piece Main Bathroom Suite
- Large Rear Garden With Vegetable Patch
- Council Tax Band - E



This floorplan is only for illustrative purposes and is not to scale. Measurements of rooms, doors, windows, and any items are approximate and no responsibility is taken for any error, omission or mis-statement. Icons of items such as bathroom suites are representations only and may not look like the real items. Made with Made Snappy 360.