



**POOLE
TOWNSEND**

Bardsea Close, Dalton-In-furness, LA15 8NW

£220,000

🛏 2 🚿 1 🛋 1



This semi-detached bungalow is located in a popular part of Dalton, an area considered to be desirable to couples, first-time buyers and families. This property would suit a range of buyers including those looking for a traditional bungalow or maybe a buyer that can see the potential this property holds to extend into the loft as many of the neighbouring homeowners have done. The accommodation includes a spacious lounge that overlooks the front garden, a modern fitted kitchen, two bedrooms and a modern wet room. The property has easier to manage gardens to the front and to the rear where there is also a detached garage with remotely operated door. The property also features a gas-fired central heating system and UPVC framed double glazing and a part boarded loft with ladder access. No upper chain.

Location

What3Words///outdoors.forgotten.unwanted

Description

This traditionally built semi-detached bungalow offers nicely appointed accommodation with modern fixtures and fittings, double glazing and a gas-fired central heating system.

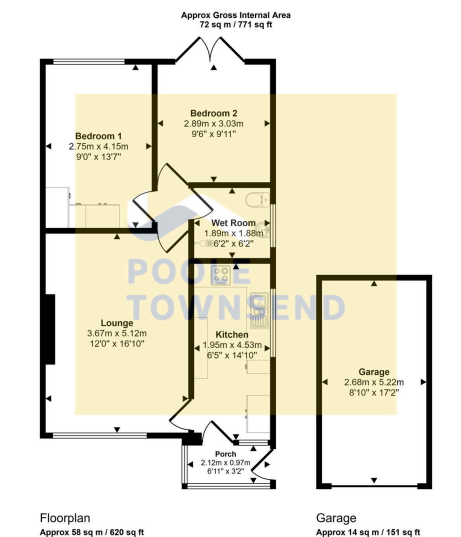
The property is set back from the road by an enclosed garden that has an artificial lawn with planted borders.

The attached porch has an internal door leading into the property via the kitchen which is modern and finished in shades of black and grey with complimentary coloured tiling to the wall areas. There is an integrated oven with grill, a halogen style hob with splashback and cooker hood and also an integrated dishwasher unit. Space is available for an upright fridge freezer and there is plumbing for a washing machine.

The lounge is a generous size room that has a large window to the front elevation letting lots of natural light into the space and also providing a pleasant outlook. There is a contemporary style fire with log effect detailing and an electric convector heated element.

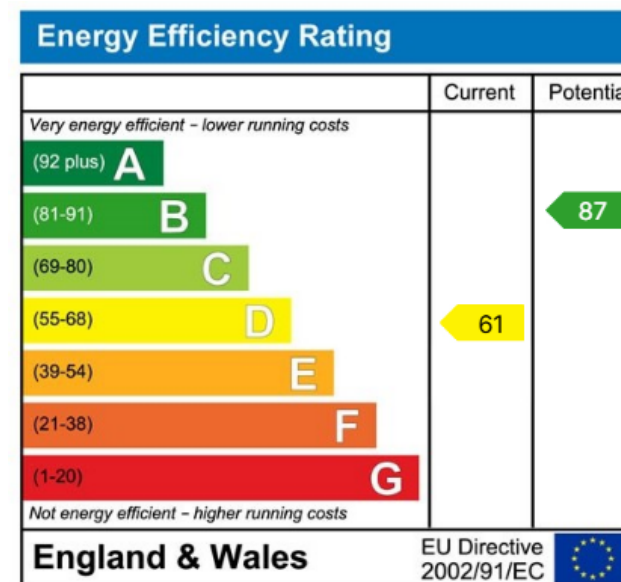
Beyond the lounge is a small inner hallway where there is ladder access into the loft and doors leading into the wet room and to the





This floorplan is only for illustrative purposes and is not to scale. Measurements of rooms, doors, windows, and any items are approximate and no responsibility is taken for any error, omission or mis-statement. Icons of items such as bathroom suites are representations only and may not look like the real items. Made with Made Snappy 360.

- Semi Detached Bungalow
- Popular Residential Area
- Spacious Lounge
- Modern Fitted Kitchen
- Two Bedrooms
- Modern Wetroom
- Front And Rear Gardens
- Detached Garage
- GCH / DG
- NO CHAIN **



Visit us at
www.pooletownsend.co.uk
enquiries@pooletownsend.co.uk

We are open
 Monday – Friday 9.00 – 5.00
 Saturday 9.00 – 1.00

Barrow 01229 811811
 Ulverston 01229 588111
 Grange 015395 33316
 Kendal 01539 734455
 Milnthorpe 015395 62044