



**POOLE
TOWNSEND**

Armon Close, Barrow-in-furness, LA13 0SY

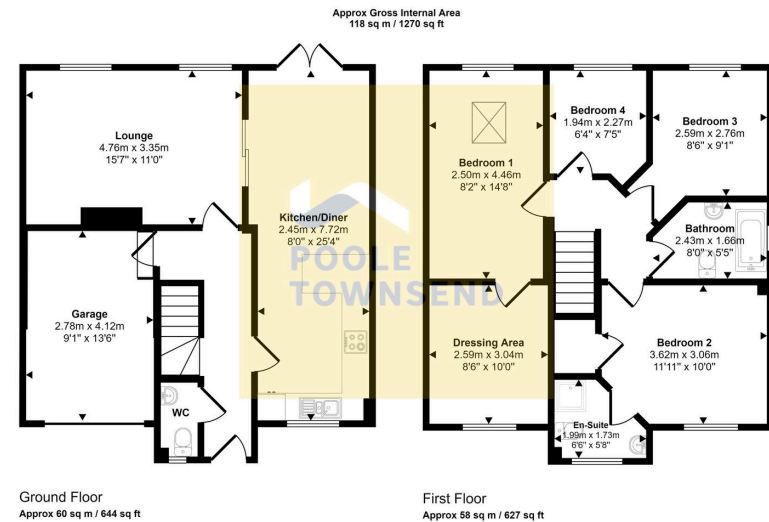
£325,000

🛏 4 🚿 2 🛋 2



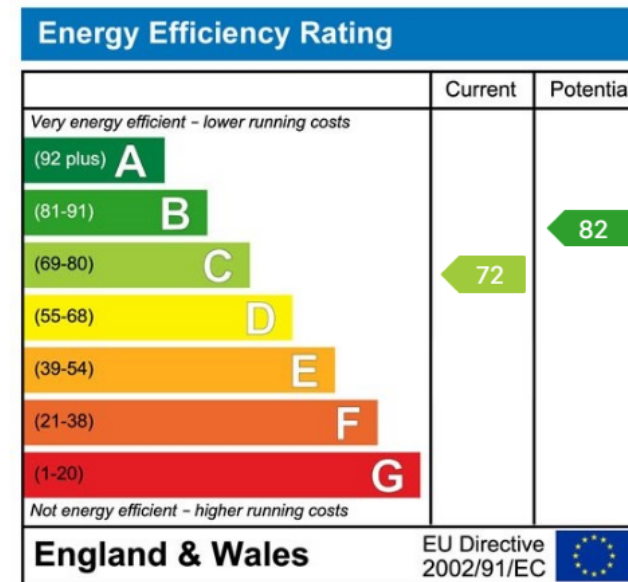
- Wonderful family home
- Lounge with media wall
- Downstairs WC
- En-suite shower room
- Driveway parking for 2 cars
- Stylish accommodation throughout
- Stunning open plan kitchen and dining area
- Four bedrooms
- Family size bathroom
- Enclosed garden to the rear





This floorplan is only for illustrative purposes and is not to scale. Measurements of rooms, doors, windows, and any items are approximate and no responsibility is taken for any error, omission or mis-statement. Icons of items such as bathroom suites are representations only and may not look like the real items. Made with Made Snappy 360.

This is a wonderful family home, offering stylish accommodation that has been extended creating an impressive master bedroom with spacious dressing room and a high vaulted ceiling. The family lounge has a central media wall, a view of the garden and sliding doors leading into a stunning open plan kitchen and dining room that has direct access into the garden. The entrance hall has access to a WC, the integral garage with laundry area and to the stairs leading to the landing. There are 4 bedrooms, 1 with a dressing room and 1 with an en-suite shower room. A family size bathroom completes the accommodation. There is driveway parking for 2 cars and an enclosed garden to the rear.



Visit us at
www.pooletownsend.co.uk
enquiries@pooletownsend.co.uk

We are open
 Monday – Friday 9.00 – 5.00
 Saturday 9.00 – 1.00

Barrow 01229 811811
 Ulverston 01229 588111
 Grange 015395 33316
 Kendal 01539 734455
 Milnthorpe 015395 62044