



**POOLE
TOWNSEND**

Estuary park, Askam-In-Furness, LA16 7JA

£249,950

3 1 1



Situated within the popular coastal village of Askam, this extended semi-detached bungalow provides nicely appointed accommodation with stunning views over the adjacent sports field to the Kirkby hills, distant Lakeland mountain range and estuary just off to your left. The accommodation includes an excellent size lounge/dining room with the kitchen to the rear that enjoys the best of the fabulous view. The inner hallway leads to the three bedrooms and a modern wet room. There is a conservatory style extension to the side where there is access into the rear garden. The property also features a gas-fired central heating system, UPVC framed double glazing and a gated driveway.

Location

What3Words///compiled.stir.receiving

Description

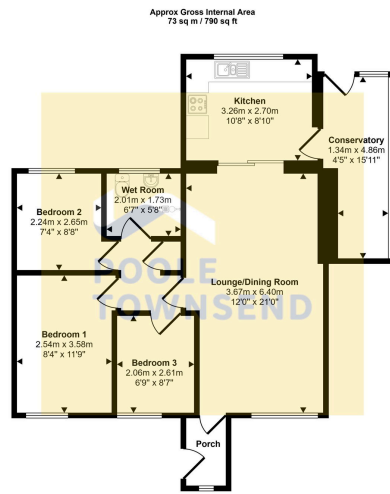
This bungalow is set on a near level plot with an easy to manage, enclosed garden area to the front where there is a footpath leading to the rear garden where there is a lawn and patio where you can enjoy being outdoors and the stunning view of the open fields and distant mountains.

The attached porch leads you directly into the living area which forms a perfect lounge and dining space with a sliding door accessing the kitchen. This great size room has a part glazed internal door leading into the inner hall where there is a useful storage cupboard, loft access and doors to the wet room and to each of the three bedrooms. There is a double room to the front of the property and two smaller single bedrooms.

The wet room is modern and well presented with a tiled finish to the walls that contrasts nicely against the white sanitary ware with chrome coloured fittings. There is a WC, pedestal wash hand basin and shower space with a dual head shower fitting with an overhead extractor fan. There is a chrome coloured ladder style radiator to the wall.

The kitchen has fitted wall and base cabinets with a traditional oak style finish to the panelled doors and a laminate style work surface above that wraps around three walls and incorporates a single

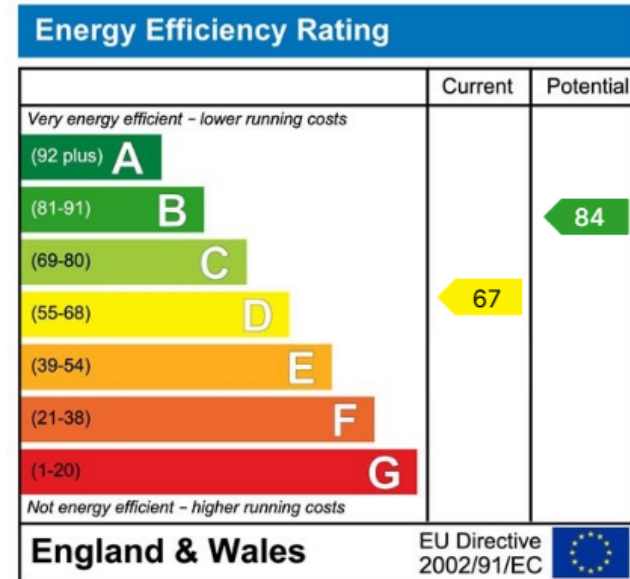




Floorplan

This floorplan is only for illustrative purposes and is not to scale. Measurements of rooms, doors, windows, and any items are approximate and no responsibility is taken for any error, omission or mis-statement. Icons of items such as bathroom suites are representations only and may not look like the real items. Made with Made Snappy 300.

- Popular Coastal Village
- Stunning Views
- Fitted Kitchen
- Modern Wet Room
- Large Rear Garden
- Extended Semi-Detached Bungalow
- Excellent Size Lounge And Dining
- Three Bedrooms
- Conservatory Extension
- Gated Driveway



Visit us at
www.pooletownsend.co.uk
enquiries@pooletownsend.co.uk

We are open
 Monday – Friday 9.00 – 5.00
 Saturday 9.00 – 1.00

Barrow 01229 811811
 Ulverston 01229 588111
 Grange 015395 33316
 Kendal 01539 734455
 Milnthorpe 015395 62044