



**POOLE
TOWNSEND**

Harrogate Street, Barrow-In-Furness, LA14 5JE

£115,000

2 1 1



Located in a highly sought-after part of town, popular with young professionals and investors, this stylishly presented terraced home offers comfortable and contemporary living. The property features a modern kitchen and bathroom, a spacious open-plan reception room, and two generously sized double bedrooms. Additional benefits include a gas-fired central heating system, UPVC double glazing, and a large, sunny rear yard. Conveniently situated close to a range of amenities, this home is a must-see.

Directions

For Satnav users enter: LA14 5JE

For what3words app users enter: leaps.puts.sharp

Location

The Harrogate Street area of town is popular with many buyers including first time purchasers, couples and familie. The immediate area has a broad variety of amenities and services including an infant and primary school, dental surgeries, Co-op, bus services, Post Office, butchers and even a small off-licence and pharmacy.

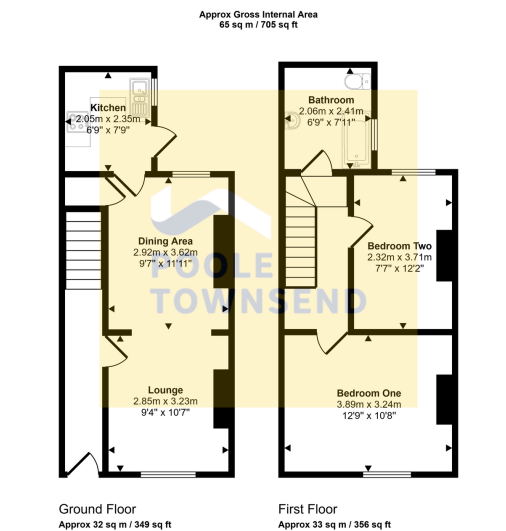
Description

This generously proportioned terraced home is accessed via an enclosed entrance hall, featuring decorative corbel detailing and laminate flooring that extends seamlessly into the adjoining reception rooms and kitchen.

The main living space is semi-divided into two distinct areas, connected by an elegant archway. At the front of the property, the lounge boasts decorative coving, along with a built-in cupboard and open shelving in the alcove beside the window. The dining area offers ample space for a table and chairs, with the added benefit of a practical under-stairs storage cupboard.

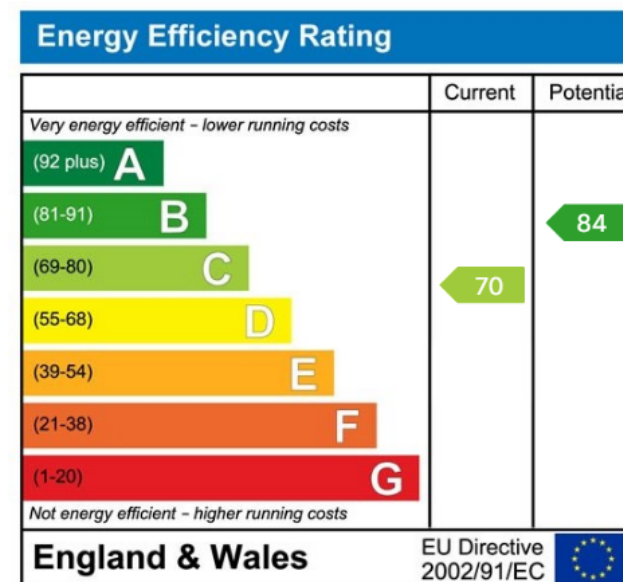
From here, the space flows effortlessly into the well-appointed kitchen, which features fitted cabinets and a complementary worktop, offering ample preparation space. A stainless steel sink





This floorplan is only for illustrative purposes and is not to scale. Measurements of rooms, doors, windows, and any items are approximate and no responsibility is taken for any error, omission or mis-statement. Icons of items such as bathroom suites are representations only and may not look like the real items. Made with Made Snappy 360.

- Popular Location
- Modern Fitted Kitchen
- Two Large Bedrooms
- UPVC Double Glazing
- Large Rear Yard
- Stylish Presented Terraced Property
- Spacious Open Plan Reception Room
- Three Piece Suite Bathroom
- GCH System
- Council Tax Band A



Visit us at
www.pooletownsend.co.uk
enquiries@pooletownsend.co.uk

We are open
 Monday – Friday 9.00 – 5.00
 Saturday 9.00 – 1.00

Barrow 01229 811811
 Ulverston 01229 588111
 Grange 015395 33316
 Kendal 01539 734455
 Milnthorpe 015395 62044