



**POOLE  
TOWNSEND**

# Egremont Gardens, Barrow-in-Furness, LA14 4PD

£199,950

🛏️ 2 🚿 1 🚗 1



This bright and airy bungalow sits in a lovely cul-de-sac location in the very popular Hawcoat area of town. The modern accommodation features a lounge with contemporary fire, fitted kitchen, two bedrooms and a smart shower room. The property also features; double glazed windows, a gas central heating system, garden to the front and rear plus a private driveway. This is a desirable part of the town that is close to Furness General Hospital, Dane Ghyll Primary School, Barrow Golf Course, convenience store and bakery etc.

## Location

What3Words///arts.voters.lined

## Description

This semi-detached bungalow is nicely presented, with a light and neutral décor throughout, a modern fitted kitchen and a smartly presented shower room.

The attached porch adds a useful space for coats/boots, keeping them away from the inner hallway where there are doors leading to the kitchen and lounge. The built-in cupboard in the hall houses the gas/electricity meters and boiler.

The lounge has a large window letting in lots of natural light. The contemporary style fire creates a focal point within the room.

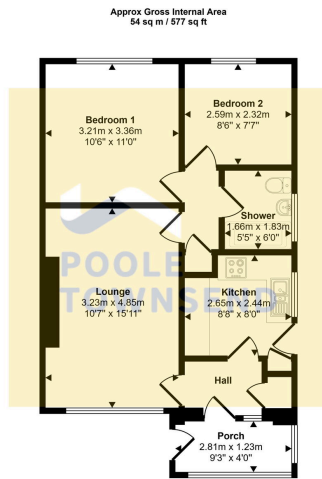
The fitted kitchen has a white gloss finish to the cabinet doors with complimentary tiling to the walls and a black coloured laminate worktop with inset sink and gas hob. There is also a low-level oven, plumbing for a washing machine and space for a fridge and freezer. The side door opens onto the driveway.

The central hallway beyond the lounge has a further cupboard, loft access and doors to the shower room and to each of the two bedrooms, both rooms offer a lovely view into the garden.

The shower room has a large shower enclosure, WC and a hand basin with cupboard storage beneath.

Tenure



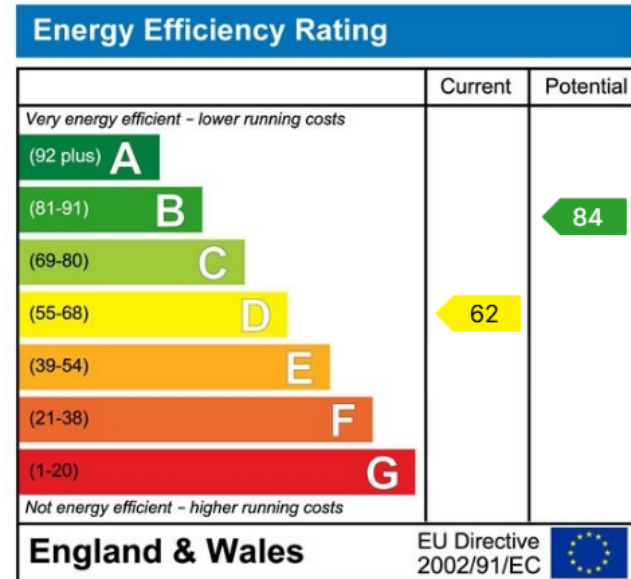


Floorplan

This floorplan is only for illustrative purposes and is not to scale. Measurements of rooms, doors, windows, and any items are approximate and no responsibility is taken for any error, omission or mis-statement. Icons of items such as bathroom suites are representations only and may not look like the real items. Made with Made Snaggy 360.



- Modern Style Bungalow
- Popular Residential Area
- Modern Featured Lounge
- Fitted Kitchen
- Two Bedrooms
- Shower Room
- Front And Rear Gardens
- Private Driveway
- Gas Central Heating And Double Glazing
- Council Tax Band B



Visit us at  
[www.pooletownsend.co.uk](http://www.pooletownsend.co.uk)  
[enquiries@pooletownsend.co.uk](mailto:enquiries@pooletownsend.co.uk)

We are open  
 Monday – Friday 9.00 – 5.00  
 Saturday 9.00 – 1.00

Barrow 01229 811811  
 Ulverston 01229 588111  
 Grange 015395 33316  
 Kendal 01539 734455  
 Milnthorpe 015395 62044