



**POOLE
TOWNSEND**

Piel View Grove, Barrow-in-furness, LA13 0EF

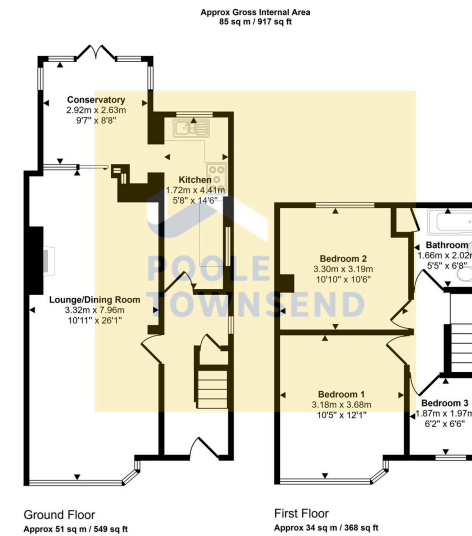
£170,000

3 1 2



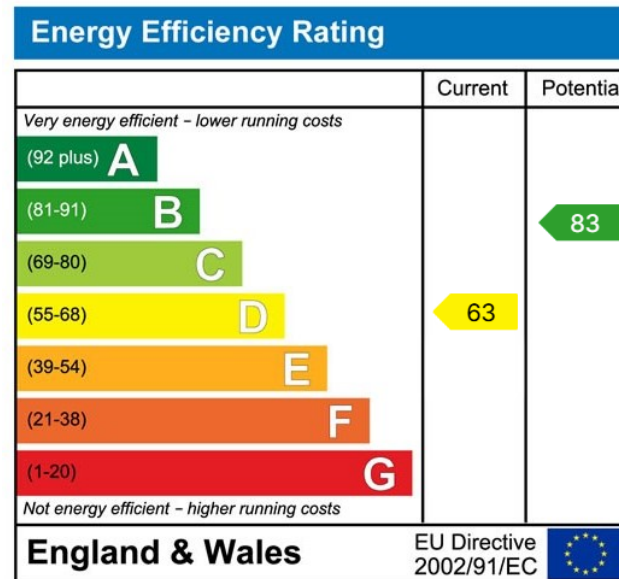
- Great Family Home
- Open Plan Lounge
- Gallery Kitchen
- 3 Bedrooms
- 3-Piece Bathroom
- Enclosed Front Garden
- Impressive Split-level Rear Garden
- GCH System
- Double Glazing
- Council Tax Band - B





This floorplan is only for illustrative purposes and is not to scale. Measurements of rooms, doors, windows, and any items are approximate and no responsibility is taken for any error, omission or mis-statement. Icons of items such as bathroom suites are representations only and may not look like the real items. Made with Made Snaggy 360.

A great family home, situated in a popular location that is convenient for local amenities. The accommodation features an open plan lounge/dining room with sliding door to a conservatory, a galley kitchen, 3 bedrooms and a 3-piece bathroom. There is an enclosed garden to the front with double gates and an impressive, split-level garden at the rear. There is a GCH system and double glazing.



Visit us at
www.pooletownsend.co.uk
enquiries@pooletownsend.co.uk

We are open
 Monday – Friday 9.00 – 5.00
 Saturday 9.00 – 1.00

Barrow 01229 811811
 Ulverston 01229 588111
 Grange 015395 33316
 Kendal 01539 734455
 Milnthorpe 015395 62044