



**POOLE
TOWNSEND**

Warwick Street, Barrow-in-furness, LA14 5AX

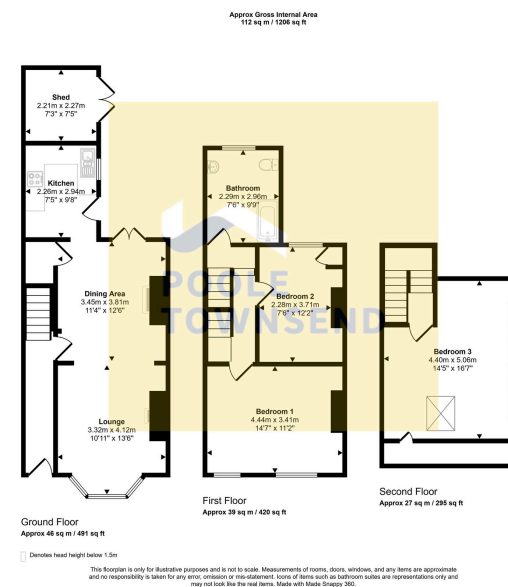
£159,950

3 1 2

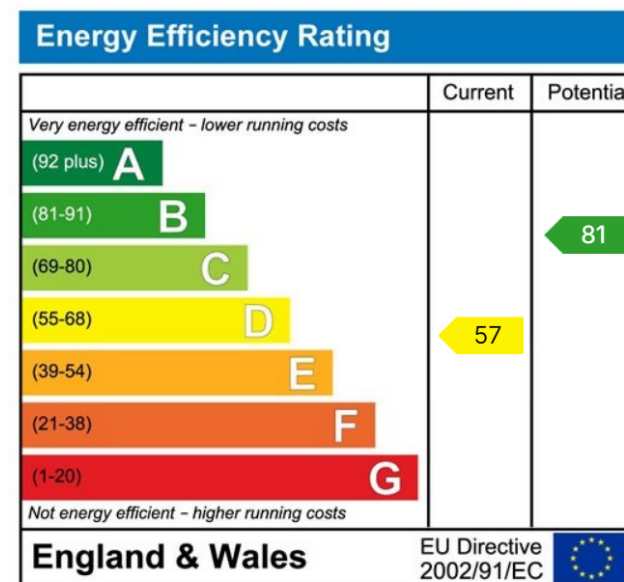


- 3-Storey home
- Modern fitted kitchen
- UPVC double glazing
- Enclosed yard with shed
- Council tax band A
- Open plan lounge/dining
- Three bedrooms
- Gas-fired central heating
- Roadside parking





This 3-storey home is set in a great location, just outside of the town centre and only a couple of minutes walk from Barrow Park, railway station and bus route, pharmacy and Co-op etc. The nicely presented accommodation features an open plan lounge/dining room with French style doors opening into a yard, a modern fitted kitchen, bathroom and 3 bedrooms. There are upvc DG windows throughout, a gas-fired central heating system, enclosed yard with shed and roadside parking.



Visit us at
www.pooletownsend.co.uk
enquiries@pooletownsend.co.uk

We are open
 Monday – Friday 9.00 – 5.00
 Saturday 9.00 – 1.00

Barrow 01229 811811
 Ulverston 01229 588111
 Grange 015395 33316
 Kendal 01539 734455
 Milnthorpe 015395 62044