



**POOLE  
TOWNSEND**



Furness Park Road, Barrow-in-furness, LA14 5PS

£265,000

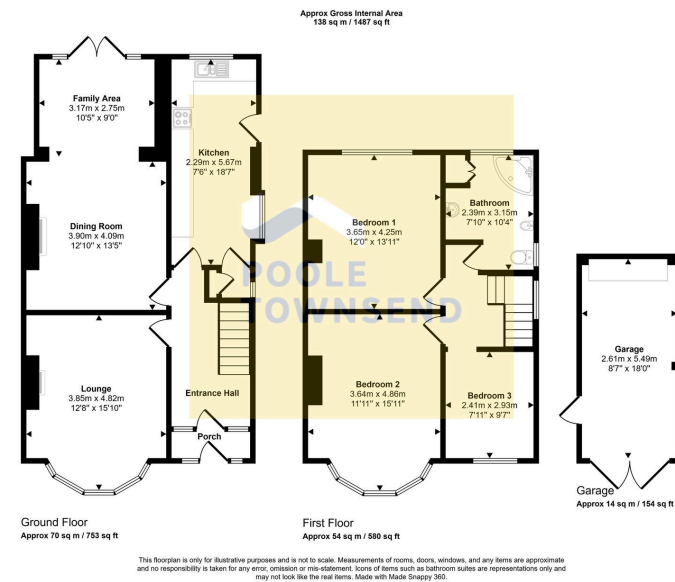
3 1 2



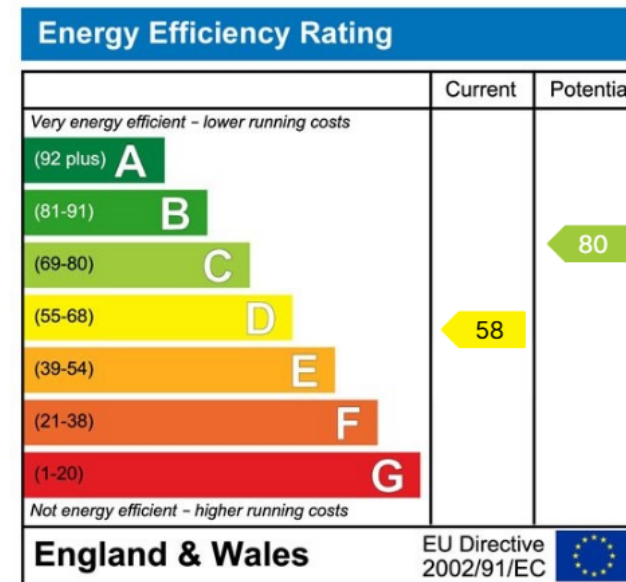


- Extended Semi-detached home
- Extended dining room
- Three bedrooms
- UPVC framed double glazing except one
- Driveway parking
- Bay windowed lounge
- Galley style kitchen
- Spacious four-piece bathroom
- Gas-fired central heating
- No upper chain





**NO CHAIN** Situated in one of the towns popular areas, this extended property has further potential for modernising and updating and possibly extending to the side. The accommodation comprises; a bay windowed lounge, extended dining room with family area and French style doors opening into the garden, a galley style kitchen, three bedrooms and a spacious four-piece bathroom. The property has UPVC framed double glazing except one, a gas-fired central heating system, driveway parking and a detached garage within the rear garden.



Visit us at  
[www.pooletownsend.co.uk](http://www.pooletownsend.co.uk)  
[enquiries@pooletownsend.co.uk](mailto:enquiries@pooletownsend.co.uk)

**We are open**  
 Monday – Friday 9.00 – 5.00  
 Saturday 9.00 – 1.00

Barrow 01229 811811  
 Ulverston 01229 588111  
 Grange 015395 33316  
 Kendal 01539 734455  
 Milnthorpe 015395 62044